

DETROIT RADIANT PRODUCTS CO.

Gas Valve Assembly Replacement Instructions

TP-840A[N] or TP-841A [P]

WARNING: THE FOLLOWING CONVERSION SHOULD BE PERFORMED BY A QUALIFIED SERVICE PERSON. CONTACT THE FACTORY WITH ANY QUESTIONS.

NOTE: Replaced/converted parts are **NOT** returnable for credit.

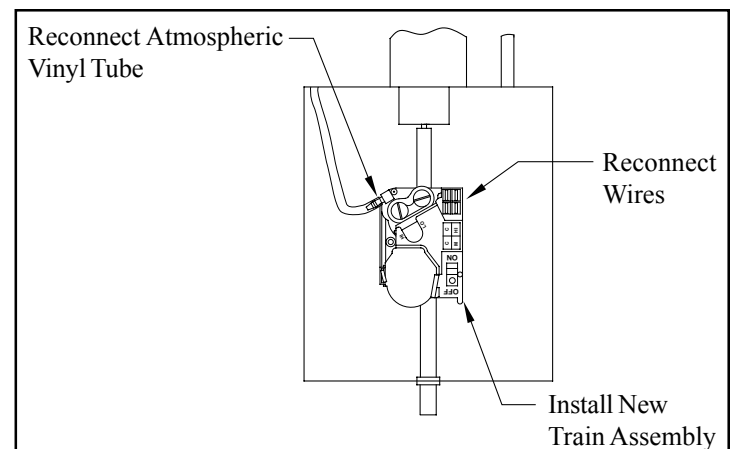
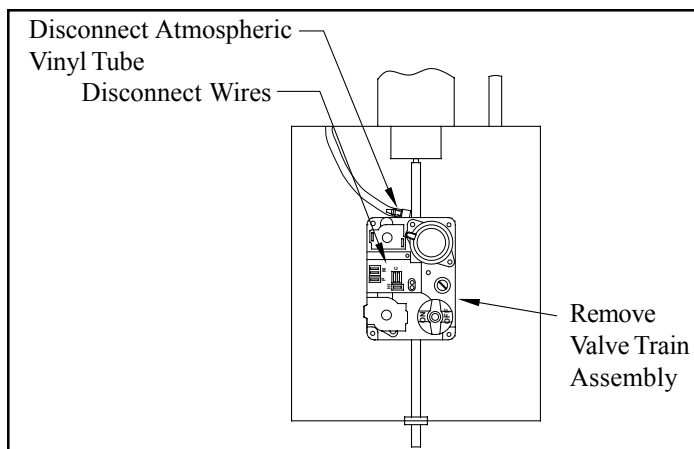
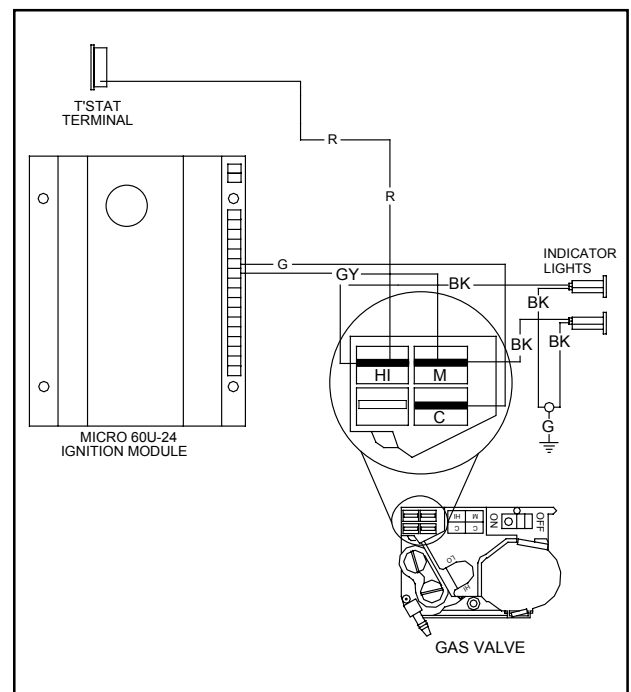
MODELS AFFECTED: HL2, LD, RVA2 & AG2

Installation Instructions

1. Open electrical circuit to heater and shut off gas supply to heater.
2. Remove the control box cover. Remove the faulty TP-840(N) or TP-841 (P) gas valve by disconnecting the wires that are attached and remove the screws that hold the valve bracket to the bottom of the box.
3. Install the new valve train assembly (TP-840A or TP-841A).
4. Using the removed screws secure the valve to the control box.
5. Wire the existing wires to the new valve according to the wiring diagrams found to the right and the instructions below:
 - Connect the joined red and black wires to the HI Terminal.
 - Take the loose black wire from the indicator light and the loose grey wire from the circuit board and connect them together.
 - Connect the green wire from the circuit board to the C Terminal.
6. Restore gas and electrical supply to the heater. Check to make sure all gas connections are tight and that there are no leaks.
7. Reinstall the control box cover.

BLOCK DIAGRAM

(Unnecessary wires omitted for clarity)



Printed in U.S.A.

© 2006 Detroit Radiant Products Co.
21400 Hoover Rd., Warren, MI 48089
T. (586) 756-0950 F. (586) 756-2626
www.detroitradiant.com
Form# LSH079-10/06 (DRP)