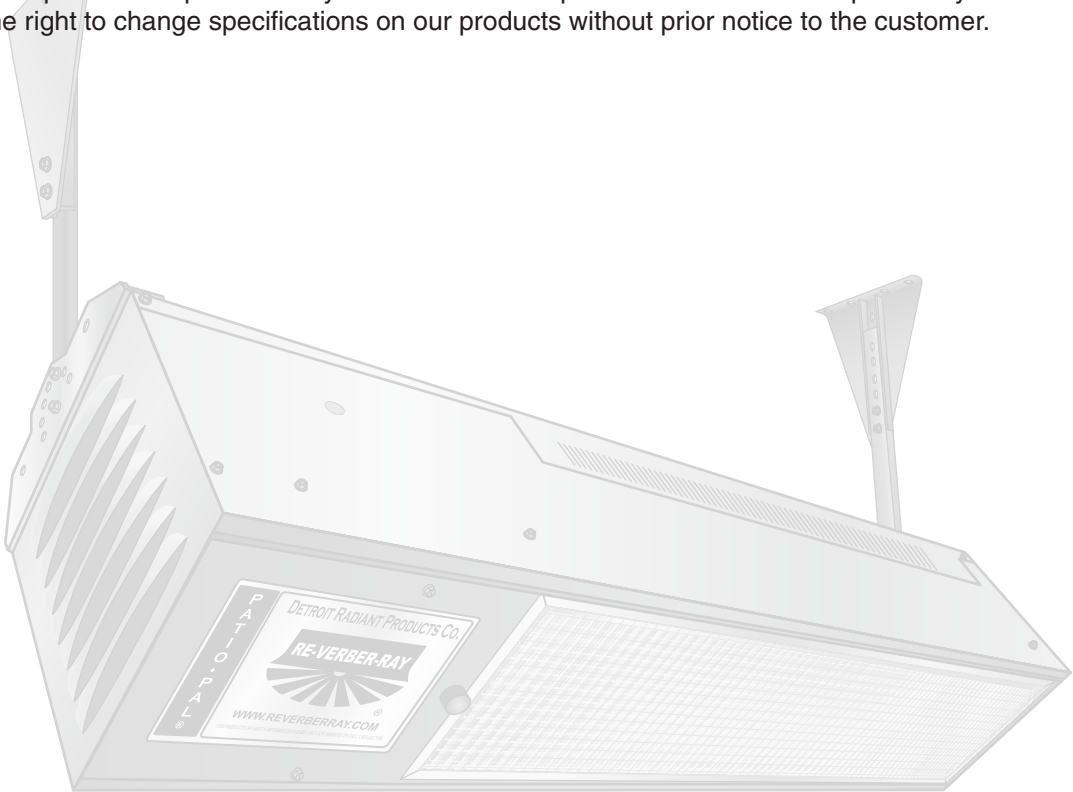


Patio Heater Parts Price List

Effective 8-1-10

NOTE: All items shown in this booklet are part of our “PTPH” product code and “PPE” price code categories.

All orders are subject to acceptance by Detroit Radiant Products Company, Warren, Michigan at prices in effect at date of shipment. All prices are F.O.B. Warren, Michigan. All State, Federal, or Municipal taxes in effect at the time of shipment or imposed at any future time on our products shall be the responsibility of the customer. We reserve the right to change specifications on our products without prior notice to the customer.



21400 Hoover Road, Warren, Michigan 48089
Phone: 586-756-0950 • Fax: 586-756-2626
www.detroitradiant.com

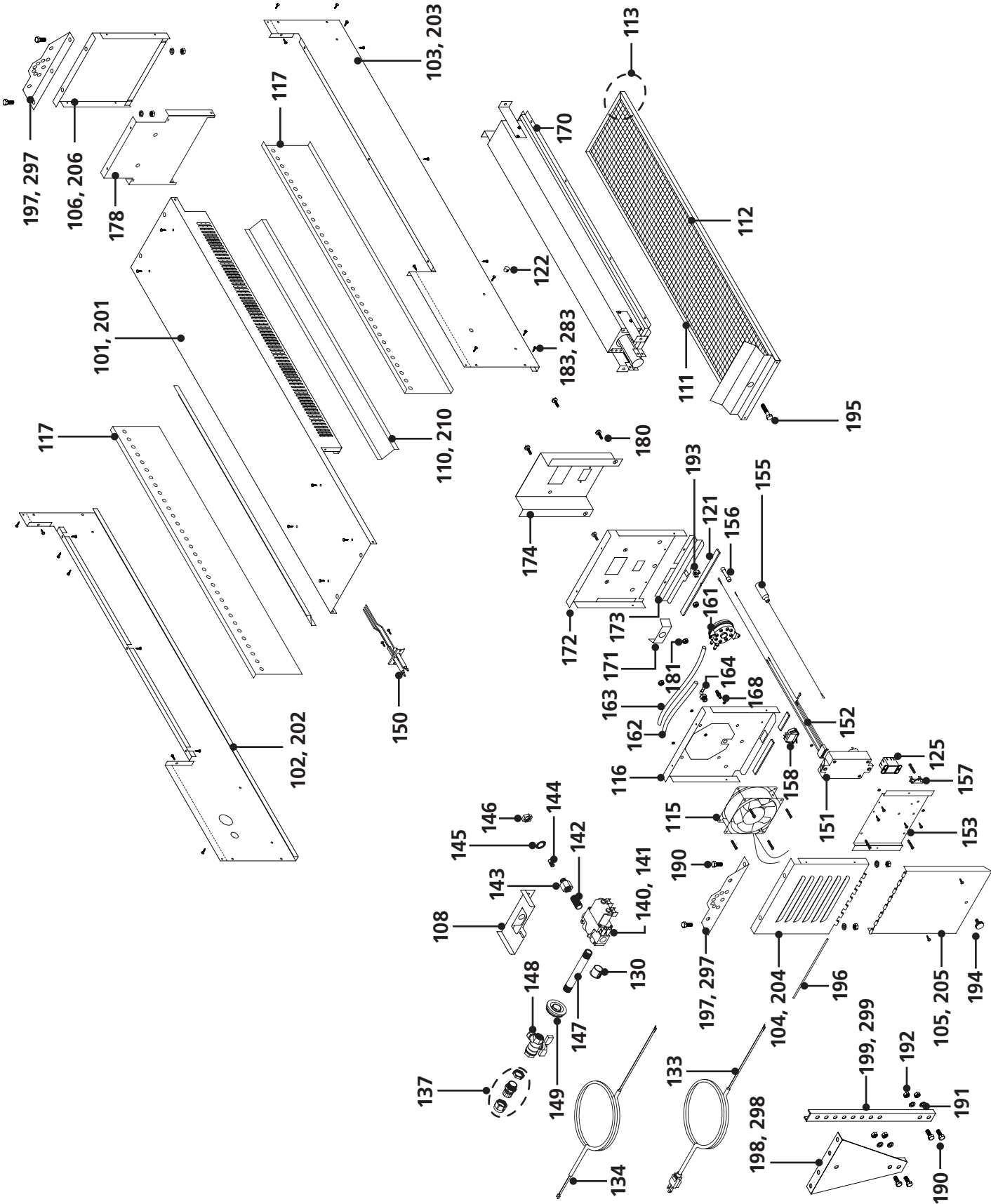
TABLE OF CONTENTS

Parts Breakdown	Page 2
Common Components	Page 3
Shell & Hanging Bracket Components	Page 4

Replacement parts information, including photos and technical data is available online at www.detroitradiant.com/parts.

Patio Heater Parts & Pricing

Parts Breakdown



Patio Heater Parts & Pricing

Common Components

Part No.	Description	List \$
PH-108	Valve Mounting Base	\$ 8.30
PH-110	Rain Guard	\$ 10.75
PH-111	Egg Crate (PH-EC) 8"X35"	\$ 57.50
PH-112	Egg Crate Frame w/ Flashshield	\$ 30.00
PH-113	Egg Crate Assembly w/ Frame & Nutsert	\$ 83.00
PH-115	120V Fan (QA109AP111WB20)	\$ 51.35
PH-116	Fan Mounting Panel	\$ 8.50
PH-117	Air Distribution Panel	\$ 50.00
PH-121	Weather Stripping	\$ 0.90
PH-122	3/8" Black Inlet Pressure Tap Grommet	\$ 0.30
PH-125	Optional Picker Relay	\$ 27.00
PH-130	3/4 Plastic Inlet Cap (Black)	\$ 0.85
PH-133	120 Volt Cord (3' Cord)	\$ 14.50
PH-134	Opt. 24 Volt Cord Set (Cord, Strain Relief, Misc. Items)	\$ 17.75
PH-137	Strain Relief (TP-68B)	\$ 3.75
PH-140	Gas Valve - Natural Gas (0850006)	\$ 80.00
PH-141	Gas Valve - Propane (0850007)	\$ 80.00
PH-142	Closed Pipe Nipple (3/8" X CL)	\$ 3.20
PH-143	3/8" Reducer Fitting (TP-56)	\$ 7.25
PH-144	Gas Orifice (Specify Model)	\$ 7.20
PH-145	Lock Washer (9/16 Ext. Lock Washer)	\$ 2.70
PH-146	Nut (9/16-18 Hex Jam Nut)	\$ 3.60
PH-147	3/8" Incoming Pipe Nipple (3/8"X5")	\$ 4.20
PH-148	3/8" Ball Valve/Inlet Tap (102-302)	\$ 15.50
PH-149	Rubber Inlet Grommet (#635)	\$ 1.70
PH-150	Ignitor Electrode (1804-59)	\$ 28.00
PH-151	Circuit Board (MARK 10DX-117)	\$ 152.00
PH-152	100-900 Harness (DRWH-120)	\$ 20.00
PH-153	Controls Mounting Panel	\$ 6.20

Part No.	Description	List \$
PH-155	12" HVW Orange Wire w/ Boot	\$ 11.50
PH-156	2-Way Red Crimp Connector	\$ 0.28
PH-157	Thermal Fuse (G4AP0200152C) (TP-1033)	\$ 17.50
PH-158	Door Switch	\$ 8.25
PH-160	Pressure Switch Mounting Bracket	\$ 4.20
PH-161	Pressure Switch (TP-264B)	\$ 53.50
PH-162	4.5" Vinyl High Temperature Hose	\$ 3.00
PH-163	9" Vinyl High Temperature Hose	\$ 3.50
PH-164	Plastic Gas Valve 90° Vent (TP-245)	\$ 3.25
PH-168	Brass Fitting (TP-97)	\$ 3.00
PH-170	Internal Burner Assembly w/ Hold-Downs & Footings	\$ 162.00
PH-171	Valve Mounting Bracket	\$ 2.40
PH-172	Valve Mounting Panel	\$ 8.90
PH-173	Service Access Door Ledge	\$ 9.25
PH-174	Burner & Electrode Mounting Panel	\$ 6.70
PH-178	Burner End Mounting Panel	\$ 8.90
PH-180	#1/4-20 x 1/2" Hex HD Machine Bolt (DR-20MB)	\$ 0.10
PH-181	#1/4-20 Hex Nut (DR-20HN)	\$ 0.10
PH-182	#8x1/2" SLTD HW Standard Screw	\$ 0.10
PH-183	#8x1/2" SLTD HW Black Screw	\$ 0.20
PH-190	5/16x3/4" Hex HD	\$ 0.30
PH-191	5/16" Split Washer Zinc	\$ 0.20
PH-192	5/16" Hex Nut	\$ 0.12
PH-193	#1/4-20 Square Cage Nut	\$ 3.35
PH-194	Control Cover Thumbscrew (#91185A398)	\$ 4.80
PH-195	#5/16-18 x 1-1/2" Gold Nutsert Bolt	\$ 7.45
PH-196	Control Cover Hinge Rod	\$ 3.00
PH-197	Hanging Bracket (single)	\$ 21.75

Patio Heater Parts & Pricing

Black Shell Parts

Part No.	Description	List \$
PH-101	Top Panel	\$ 51.75
PH-102	Left Frame Side Panel (Gas & Electric)	\$ 29.65
PH-103	Right Frame Side Panel	\$ 29.65
PH-104	Control End Panel w/ Louvers & Hinge	\$ 10.60
PH-105	Control Box Cover w/ Hinge	\$ 10.00
PH-106	End Panel	\$ 9.30
PH-110	Rain Guard	\$ 10.75
PH-182	#8x1/2" SLTD HW Standard Screw	\$ 0.10
PH-183	#8x1/2" SLTD HW Black Screw	\$ 0.20

Stainless Steel Shell Parts

Part No.	Description	List \$
PH-201	Stainless Steel Top Panel	\$ 114.00
PH-202	Stainless Steel Left Frame Side Panel (Gas & Electric)	\$ 74.00
PH-203	Stainless Steel Right Frame Side Panel	\$ 74.00
PH-204	Stainless Steel Control End Panel w/ Louvers & Hinge	\$ 25.00
PH-205	Stainless Steel Control Box Cover w/ Hinge	\$ 25.00
PH-206	Stainless Steel End Panel	\$ 25.00
PH-210	Stainless Steel Rain Guard	\$ 25.00
PH-282	Stainless Steel #8x1/2" SLTD HW Screw	\$ 0.14
PH-283	Stainless Steel #8x1/2" SLTD HW Plated Screw	\$ 0.22
PH-297	Stainless Steel Hanging Bracket	\$ 53.00

Optional Hanging Bracket Parts (PH-BKT)

Part No.	Description	List \$
PH-190	5/16" x 3/4" Hex HD	\$ 0.30
PH-191	5/16" Split Washer Zinc	\$ 0.20
PH-192	5/16" Hex Nut	\$ 0.12
PH-198	Wall Bracket Assembly	\$ 30.00
PH-199	Support Channel	\$ 9.40
PH-298	304 Series Stainless Steel Wall Bracket Assembly	\$ 51.00
PH-299	304 Series Stainless Steel Support Channel	\$ 18.75