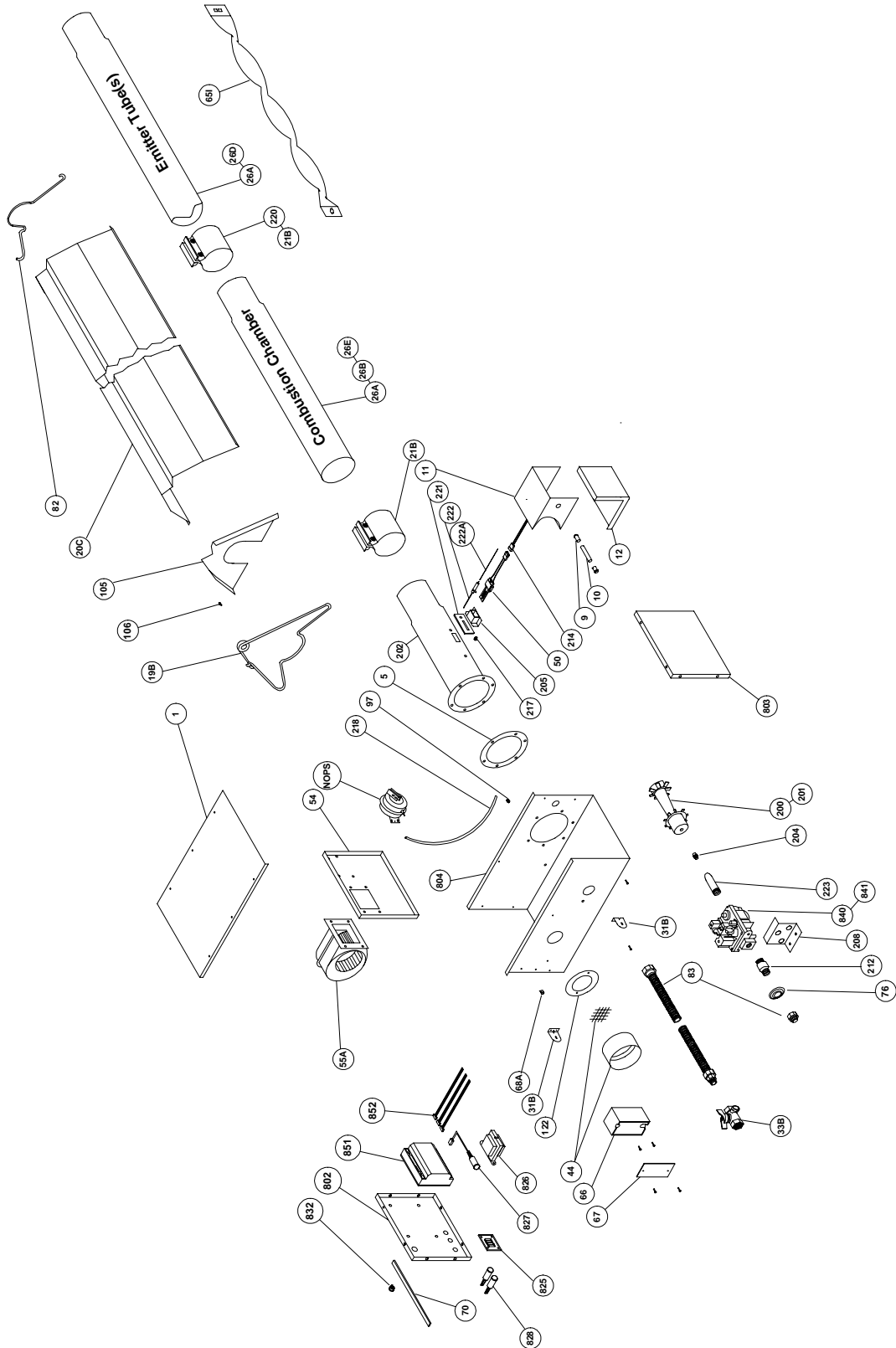


HL-2 Series

Parts Breakdown





HL-2 SERIES PARTS LISTING

TP#	ITEM	TP#	ITEM
TP-1	CONTROL BOX COVER	TP-111	5' ALUM. TUBE, PAINTED W/1 CLAMP
TP-5	FLANGE GASKET	TP-112	5' REFLECTOR
TP-9	CONDUIT COUPLING	TP-122	GASKET FOR AIR ORIFICE & AIR COLLAR
TP-10	CONDUIT 4" X 1/2"	TP-200	BURNER (50 TO 100 MBTU/H)
TP-11	GLO-BAR IGNITOR BOX	TP-201	BURNER (125 MBTU/H TO 200 MBTU/H)
TP-12	GLO-BAR IGNITOR BOX COVER	TP-202	16" BURNER TUBE W/ FLANGE
TP-14	SIGHT GLASS GASKET	TP-204	GAS ORIFICE - CONSULT FACTORY
TP-15	SIGHT GLASS	TP-205	GLO-BAR HOLDER
TP-16	SIGHT GLASS WASHER	TP-208	"Z" MOUNTING BRACKET
TP-19B	WIRE HANGER	TP-212	1/2" X 3" PIPE NIPPLE
TP-20C	120" REFLECTOR	TP-217	PRESSURE BARB FITTING
TP-21B	TUBE CLAMP	TP-218	EXHAUST PRESSURE TUBE (VINYL)
TP-26A	10 FT. ALUMINIZED RADIANT/COMBUSTION TUBE	TP-220	STAIN. STL. TUBE CLAMP (175 & 200 MBTU/H)
TP-26B	10 FT. TITANIUM COATED COMBUSTION TUBE	TP-221	GLO-BAR HOLDER GASKET
TP-26D	10 FT. 304 STAINLESS RADIANT TUBE	TP-222	FLAME ROD
TP-26E	10 FT. 409 STAINLESS COMBUSTION TUBE	TP-223	GAS MANIFOLD
TP-31B	MOUNTING BRACKET	TP-802	END PANEL - LEFT
TP-33B	1/2" GAS COCK	TP-803	END PANEL - RIGHT
TP-44	AIR ORIFICE W/SCREEN (CONSULT FACTORY)	TP-804	CONTROL BOX
TP-50	GLO-BAR IGNITOR	TP-825	OPTIONAL HLRB RELAY BOARD
TP-54	BURNER BOX CENTER PANEL	TP-826	40VA TRANSFORMER (OLD TP219)
TP-55A	FAN BLOWER	TP-827	RED LED DISPLAY DIAGNOSTIC LIGHT
TP-65I	33" INTERLOCKING HEAT DIFFUSER (BAFFLE)	TP-828	YELLOW OPERATIONAL IND. LIGHT (OLD TP216)
TP-66	2" X 4" OUTLET BOX	TP-832	THERMOSTAT TERMINAL STRIP (OLD TP213)
TP-67	2" X 4" OUTLET BOX COVER	TP-840	36E96-224 TWO STAGE GAS VALVE-NAT (OLD TP210)
TP-68A	STRAIN RELIEF BUSHING	TP-841	36E96-226 TWO STAGE GAS VALVE-LP (OLD TP210P)
TP-70	CONTROL BOX COVER GASKET (PER FOOT**)	TP-851	MICRO-60-24 DIAGNOSTIC CIRCUIT BOARD
TP-76	RUBBER GROMMET	TP-852	WIRE HARNESS SET (3 PCS.) FOR MICRO 60 BOARD
TP-82	REFLECTOR CENTER SUPPORT	TP-NOPS	N. O. Pressure Switch (Select Switch Below, BTU Dependent)
TP-83	STAINLESS STEEL FLEX CONNECTOR	(TP-61B)	DIFFERENTIAL PRESSURE SWITCH - 50 TO 100 MBTU/H
TP-97	1/4" x 1/4" BRASS INT./EXT. ATMOS. BARB FITTING	(TP-61E)	DIFFERENTIAL PRESSURE SWITCH - 125 & 150 MBTU/H
TP-105	REFLECTOR END CAP	(TP-61D)	DIFFERENTIAL PRESSURE SWITCH - 175 MBTU/H
TP-106	REFLECTOR CLIP	(TP-1261A)	DIFFERENTIAL PRESSURE SWITCH - 200 MBTU/H
TP-108	5' AL-TI TUBE, PAINTED W. ONE CLAMP		

6" TOTAL NEEDED TO COVER OUTER EDGES OF A BURNER BOX INDICATES THAT THE PART IS BEING USED IN CURRENT PRODUCTION.

