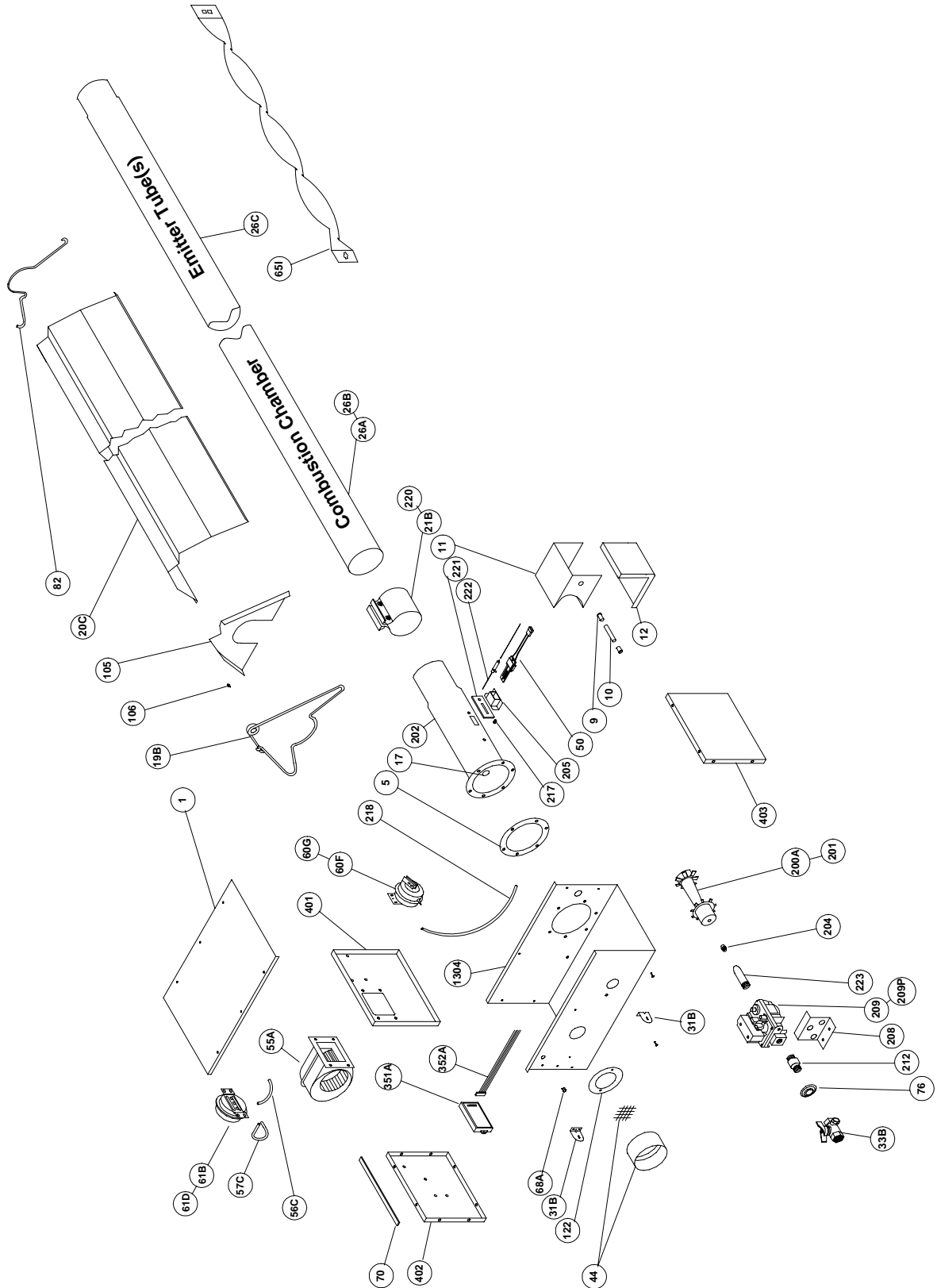


# XTS Series

## Parts Breakdown





## XTS SERIES PARTS LISTING

TP#	ITEM	TP#	ITEM
TP-1	CONTROL BOX COVER	TP-82	REFLECTOR CENTER SUPPORT
TP-5	FLANGE GASKET	TP-105	REFLECTOR END CAP
TP-9	CONDUIT COUPLING	TP-106	REFLECTOR CLIP
TP-10	CONDUIT 4" X 1/2"	TP-108	5' AL-TI TUBE, PAINTED WITH ONE CLAMP
TP-11	GLO-BAR IGNITOR BOX	TP-111	5' ALUM. TUBE, PAINTED WITH ONE CLAMP
TP-12	GLO-BAR IGNITOR BOX COVER	TP-112	5' REFLECTOR
TP-17	SIGHT GLASS KIT	TP-122	GASKET FOR AIR ORIFICE & AIR COLLAR
TP-19B	WIRE HANGER W/ SPRING CLIP	TP-200A	BURNER (50 TO 100 MBTU/H)
TP-20C	120" ALUMINUM REFLECTOR	TP-201	BURNER (125 TO 175 MBTU/H)
TP-20D	120" STAINLESS STEEL REFLECTOR	TP-202	16" BURNER TUBE WITH FLANGE
TP-21B	4" TUBE CLAMP	TP-204	GAS ORIFICE - CONSULT FACTORY
TP-26A	10 FT. ALUM. RADIANT/COMBUSTION TUBE	TP-205	GLO-BAR HOLDER
TP-26B	10 FT. TITANIUM COMBUSTION TUBE	TP-208	"Z" MOUNTING BRACKET
TP-26C	10FT. UNCOATED HOT ROLLED RADIANT TUBE	TP-209	36E36A-246 GAS VALVE - NAT GAS ASSY
TP-31B	CONTROL BOX BRACKET	TP-209P	36E36A-240 GAS VALVE - LP GAS ASSY
TP-33B	1/2" GAS COCK	TP-212	1/2" X 3" PIPE NIPPLE
TP-44	AIR ORIFICE W/SCREEN - CONSULT FACTORY	TP-217	PRESSURE BARB FITTING
TP-50	GLO-BAR IGNITOR	TP-218	EXHAUST PRESSURE TUBE (VINYL)
TP-55A	FAN BLOWER	TP-220	4" STAINLESS STEEL BUTT CLAMP
TP-56C	1/4" ATMOSPHERIC TUBE (VINYL)	TP-221	GLO-BAR HOLDER GASKET
TP-57C	1/4" PRESSURE SENSING TUBE (VINYL)	TP-222	FLAME ROD
TP-60F	EXHAUST P.S. (50 TO 150 MBH) #PPS 10070-2553	TP-223	GAS MANIFOLD
TP-61B	BURNER P.S. (50 TO 100MBTH) #PPS 10069-2550	TP-330	DIVIDER GROMMET
TP-61D	BURNER P.S. (125 to 175 MBTH) #PPS 10069-2551	TP-331	GREEN SELF TAP GROUND SCREW
TP-65I	INTERLOCKING 33" BAFFLE SECTION	TP-351A	MARK 17-DU POTTED BOARD
TP-66	2" X 4" OUTLET BOX	TP-352A	WIRE HARNESS FOR TP-351A
TP-67	2" X 4" OUTLET BOX COVER	TP-401	DIVIDER PANEL
TP-68A	STRAIN RELIEF BUSHING	TP-402	LEFT END PANEL
TP-70	CONTROL BOX COVER GASKET (PER FOOT**)	TP-403	RIGHT END PANEL
TP-76	RUBBER GROMMET	TP-404	CONTROL BOX

**6' TOTAL NEEDED TO COVER OUTER EDGES OF A BURNER BOX.**

