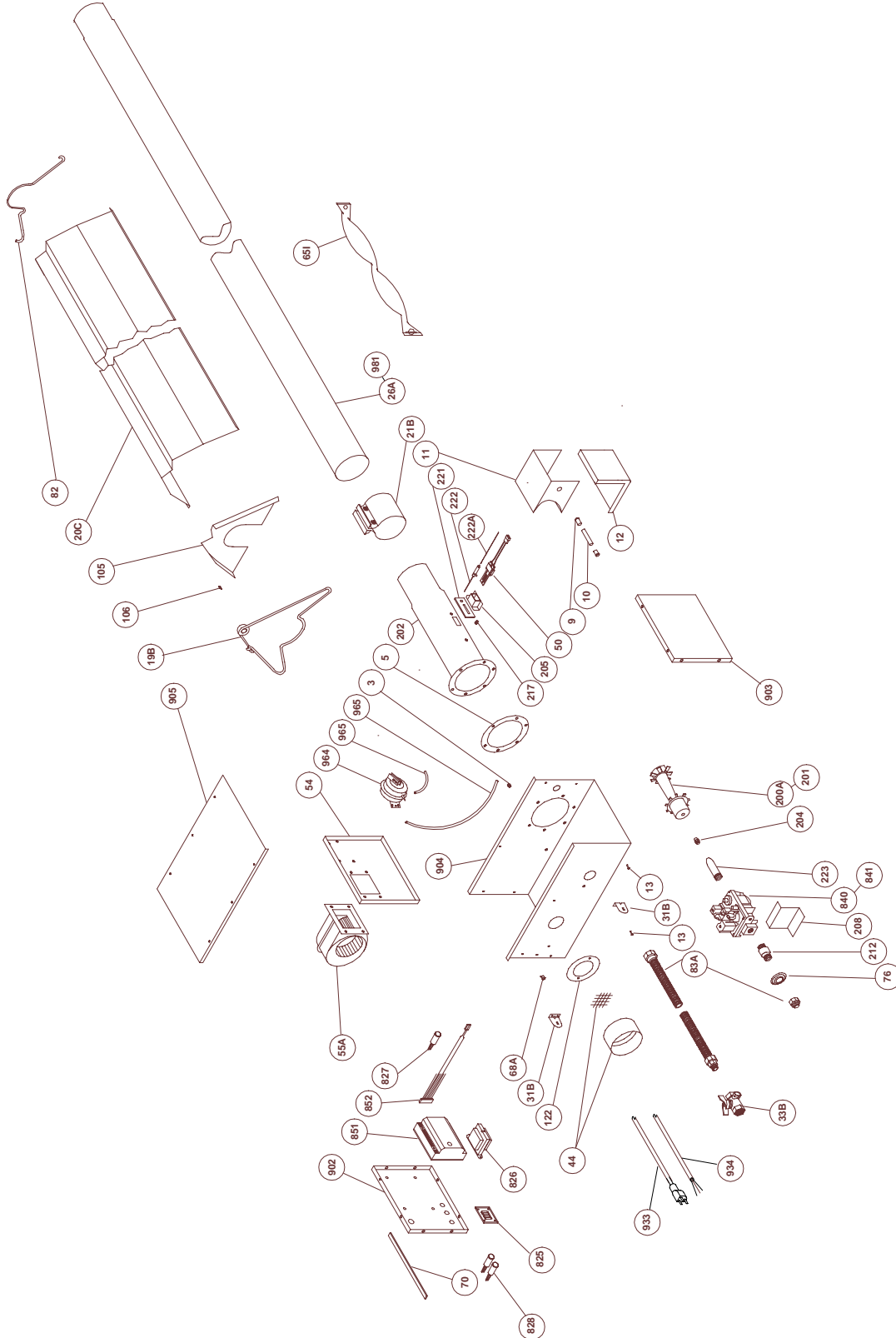


RVA-2 Series

Parts Breakdown





TP#	ITEM	TP#	ITEM
TP-9	CONDUIT COUPLING	TP-200A	SS BURNER (50 TO 100 MBTU/H LP GAS)
TP-10	CONDUIT 4" X 1/2"	TP-201	SS BURNER (150,000 BTU N or LP GAS)
TP-11	IGNITOR BOX	TP-204-SIZE	GAS ORIFICE - CONSULT FACTORY
TP-12	IGNITOR BOX COVER	TP-205	GLO-BAR HOLDER
TP-13	CONTROL BOX SCREWS	TP-208	"Z" MOUNTING BRACKET
TP-14	SIGHT GLASS GASKET	TP-212	1/2" X 3" PIPE NIPPLE
TP-15	SIGHT GLASS	TP-214	GLO-BAR WIRING HARNESS
TP-16	SIGHT GLASS WASHER	TP-217	PRESSURE BARB FITTING
TP-19B	4" TUBE & REFLECTOR HANGER	TP-219	40VA TRANSFORMER
TP-20C	120" REFLECTOR	TP-221	GLO-BAR HOLDER GASKET
TP-21B	4" TUBE CLAMP	TP-222	FLAME ROD
TP-26A	10 FT. RADIANT TUBE STRAIGHT	TP-222A	FLAME ROD WIRE
TP-31B	CONTROL BOX BRACKET	TP-223	GAS MANIFOLD
TP-33B	1/2" GAS COCK	TP-825	HLRB RELAY BOARD
TP-44-SIZE	AIR ORIFICE W/SCREEN (CONSULT FACTORY)	TP-826	40VA TRANSFORMER (OLD TP-219)
TP-50	GLO-BAR IGNITOR	TP-827	RED LED DISPLAY DIAGNOSTIC LIGHT
TP-54	BURNER BOX DIVIDER	TP-828	YELLOW OPERATIONAL IND. LIGHT
TP-55A	FAN BLOWER	TP-840	36E96-224 TWO-STAGE GAS VALVE - NAT (OLD TP-210)
TP-57A	1/4" PRESSURE TUBE	TP-841	36E96-226 TWO-STAGE GAS VALVE - LP (OLD TP-210P)
TP-65I	33" INTERLOCKING BAFFLE	TP-851	MICRO-60-24 DIAGNOSTIC CIRCUIT BOARD
TP-68A	STRAIN RELIEF BUSHING	TP-852	WIRE HARNESS SET (3 PCS.) FOR MICRO 60 BOARD
TP-68B	LARGE STRAIN RELIEF BUSHING (FOR CORDS)	TP-902	END PANEL - LEFT
TP-70	CONTROL BOX COVER GASKET (PER FOOT**)	TP-903	END PANEL - RIGHT
TP-76	RUBBER GROMMET	TP-904	CONTROL BOX
TP-82	4" REFLECTOR CENTER SUPPORT	TP-905	CONTROL BOX COVER
TP-83A-PVC	PVC COATED STAINLESS FLEX CONNECTOR	TP-933	6' BLACK 120V PLUG
TP-105	REFLECTOR END CAP	TP-934	YELLOW 24V CONTROL WIRE
TP-106	REFLECTOR CLIP	TP-964	NORMALLY OPEN DIFFERENTIAL SWITCH
TP-108	5' AL-TI TUBE, PAINTED W/ ONE CLAMP	TP-965	1/4" VINYL ATMOSPHERIC TUBE AND EXHAUST PRESSURE TUBE
TP-111	5' ALUM. TUBE, PAINTED W/ ONE CLAMP	TP-981	409 STAINLESS STEEL RADIANT TUBE
TP-112	5' REFLECTOR		
TP-122	GASKET FOR AIR ORIFICE & AIR COLLAR		
NON RVA-2 PARTS (older RVA model)			
TP-60G	EXHT PRESSURE SWITCH - 50 TO 150 MBTU/H	DB-201NF	4" TO 3" REDUCER FITTING NO FLANGE
TP-61B	BURNER PRESSURE SWITCH - 50 - 100 MBTU/H	DB-204	3" WIRE HANGER
TP-61D	BURNER PRESSURE SWITCH - 150 MBTU/H	DB-205	3" TUBE CLAMP
DB-82A	3" REFLECTOR CENTER SUPPORT	DB-207	10' ALUMINIZED, PAINTED 3" RADIANT TUBE
		TP-211A	MARK 17U-24 CIRCUIT BOARD (REMOTE SENSE)

** 6" NEEDED TO COVER EDGES OF BURNER BOX

