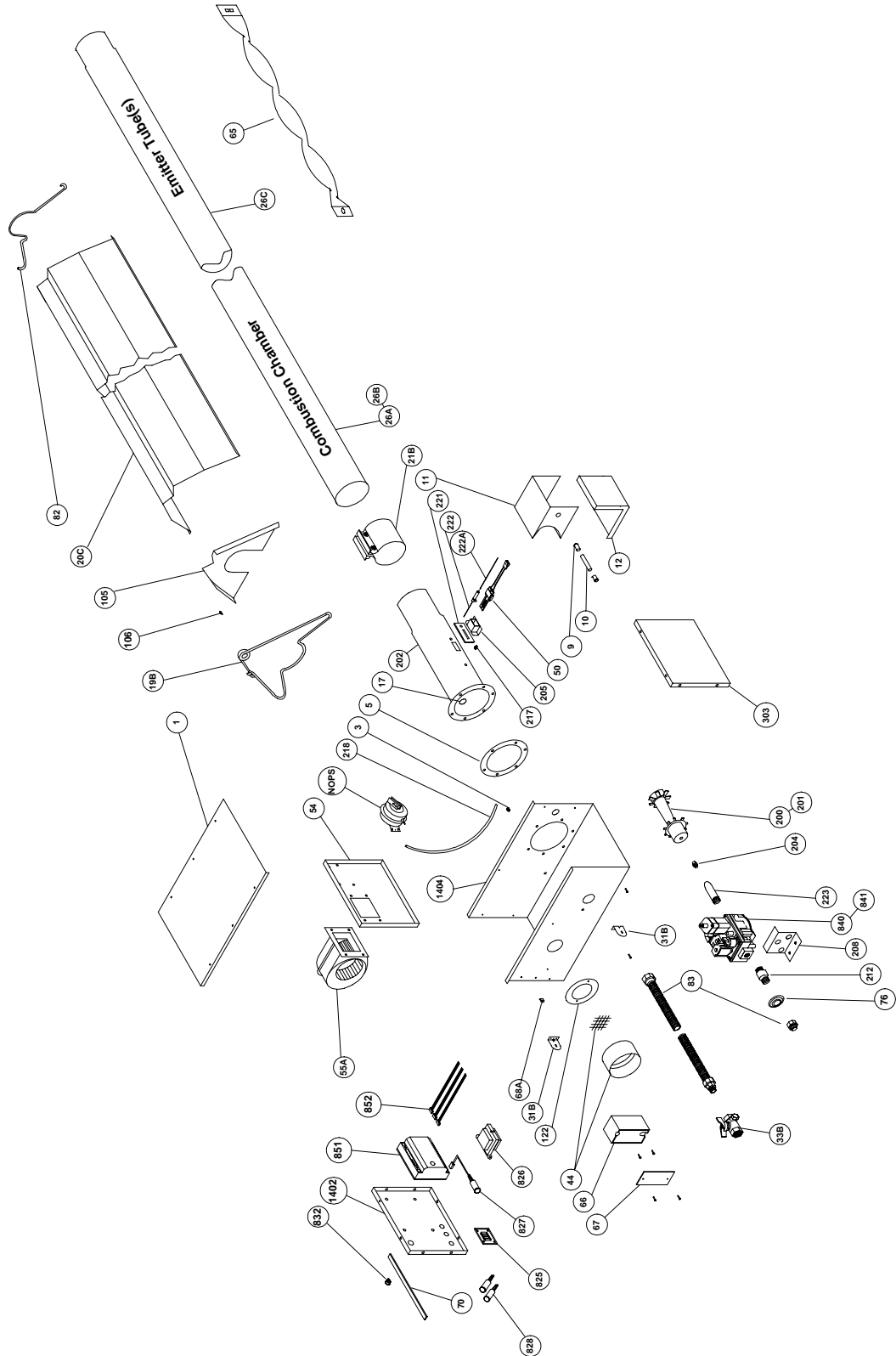


AG-2 Series

Parts Breakdown





AG-2 SERIES PARTS LISTING

TP#	ITEM	TP#	ITEM
TP-1	CONTROL BOX COVER	TP-200	BURNER (50 TO 100 MBTU/H)
TP-5	FLANGE GASKET	TP-201	BURNER (125 MBTU/H TO 200 MBTU/H)
TP-9	CONDUIT COUPLING	TP-202	16" BURNER TUBE W/ FLANGE
TP-10	CONDUIT 4" X 1/2"	TP-204	GAS ORIFICE - CONSULT FACTORY
TP-11	GLO-BAR IGNITOR BOX	TP-205	GLO-BAR HOLDER
TP-12	GLO-BAR IGNITOR BOX COVER	TP-208	"Z" MOUNTING BRACKET
TP-17	SIGHT GLASS KIT	TP-211	MARK 17X-24 CIRCUIT BOARD
TP-19B	WIRE HANGER	TP-211A	MARK 17U-24 CIRCUIT BOARD (REMOTE SENSE)
TP-20C	120" REFLECTOR	TP-212	1/2" X 3" PIPE NIPPLE
TP-21B	TUBE CLAMP	TP-214	GLO-BAR WIRING HARNESS
TP-26A	10 FT. RADIANT TUBE STRAIGHT	TP-217	PRESSURE BARB FITTING
TP-26B	10 FT. RADIANT TUBE STRAIGHT (AL-TI)	TP-218	EXHAUST PRESSURE TUBE (VINYL)
TP-26C	10 FT. UNCOATED HOT ROLLED STEEL RADIANT TUBE	TP-221	GLO-BAR HOLDER GASKET
TP-31B	CONTROL BOX BRACKET	TP-222	FLAME ROD
TP-33B	1/2" GAS COCK	TP-222A	FLAME ROD WIRE
TP-44	AIR ORIFICE W/SCREEN (CONSULT FACTORY)	TP-223	GAS MANIFOLD
TP-50	GLO-BAR IGNITOR	TP-303	END PANEL - RIGHT
TP-54	BURNER BOX DIVIDER	TP-825	HLRB RELAY BOARD
TP-55A	FAN BLOWER	TP-826	40VA TRANSFORMER (OLD TP219)
TP-65	33" INTERLOCKING HEAT DIFFUSER (BAFFLE)	TP-827	RED LED DISPLAY DIAGNOSTIC LIGHT
TP-66	2" X 4" OUTLET BOX	TP-828	YELLOW OPERATIONAL IND. LIGHT (OLD TP216)
TP-67	2" X 4" OUTLET BOX COVER	TP-832	THERMOSTAT TERMINAL STRIP (OLD TP213)
TP-68A	STRAIN RELIEF BUSHING	TP-840	36E96-224 TWO STAGE GAS VALVE-NAT (OLD TP210)
TP-70	CONTROL BOX COVER GASKET (PER FOOT**)	TP-841	36E96-226 TWO STAGE GAS VALVE-LP (OLD TP210P)
TP-76	RUBBER GROMMET	TP-851	MICRO-60-24 DIAGNOSTIC CIRCUIT BOARD
TP-82	REFLECTOR CENTER SUPPORT	TP-852	WIRE HARNESS SET (3 PCS.) FOR MICRO 60 BOARD
TP-83	STAINLESS STEEL FLEX CONNECTOR	TP-1402	END PANEL - LEFT
TP-105	REFLECTOR END CAP	TP-1404	CONTROL BOX
TP-106	REFLECTOR CLIP	TP-NOPS	NORMALLY OPEN DIFFERENTIAL SWITCH
TP-108	5' AL-TI TUBE, PAINTED W. ONE CLAMP	(TP-61B)	N.O. Differential Pressure Switch (65 TO 75MBTU/H)
TP-111	5' ALUM. TUBE, PAINTED W/1 CLAMP	(TP-61E)	N.O. Differential Pressure Switch (100 TO 125MBTU/H)
TP-112	5' REFLECTOR	(TP-61D)	N.O. Differential Pressure Switch (150MBTU/H)
TP-122	GASKET FOR AIR ORIFICE & AIR COLLAR		

