

DET3 Series Insert Manual



For complete installation instructions, see the Tube Heater General Manual that accompanies this Series Insert Manual.

RE-VERBER-RAY[®]
by Detroit Radiant Products Company

The DET3 Series Infrared Tube Heater is a positive pressure, two-stage radiant heater system. This insert manual is a supplement to the Tube Heater General Manual and provides specific information related to the DET3 series model. All persons involved with the installation, operation, and maintenance of the heater system must read and understand the information in this insert manual and the accompanying Tube Heater General Manual.

⚠ WARNING



Improper installation, adjustment, alteration, service, or maintenance can cause property damage, injury, or death. Read the installation, operation, and maintenance instructions thoroughly before installing or servicing this equipment.

This heater must be installed and serviced by trained gas installation and service personnel only. Failure to comply could result in personal injury, asphyxiation, death, fire, or property damage.



In locations used for the storage of combustible materials, signs must be posted to specify the maximum permissible stacking height to maintain the required clearances from the heater to the combustibles. Signs must either be posted adjacent to the heater thermostats or, in the absence of such thermostats, in a conspicuous location.



Not for residential use! Do not use this heater in the home, sleeping quarters, attached garages, etc. **Installation of a commercial tube heater system in residential indoor spaces may result in property damage, serious injury, asphyxiation, or death.**

For Your Safety

If you smell gas:

- Do not try to light any appliance.
- Do not touch any electrical switch.
- Do not use any phone in your building.
- Immediately call your gas supplier from a neighbor's phone.
- Follow the gas supplier's instructions.
- If you cannot reach your gas supplier, call the fire department.

INSTALLER: Present this manual to the end user.

Keep these instructions in a clean and dry place for future reference.

Model#: _____ Serial #: _____
(located on rating label)

LIODET3-Rev. 21314
Print: 2M-02/17_r4-01/21 (CDS)
Replaces: LIODET3-1M-8/15 (CDS)

Contents

1.0 Safety	3
Safety Labels and Their Locations	3
Clearances to Combustibles	4
2.0 Installation	6
Gas Requirements	6
Electrical Requirements	6
Wiring	7
Specifications	10
Tube Installation Sequence	11
3.0 Operation	12
Sequence of Operation	12
Thermostat	13
4.0 Troubleshooting Guide	14
5.0 Parts	18
Burner Assembly Components	18
Tube and Reflector Components	19
Kit Contents Check List	20
Approvals	20
Limited Warranty	20

NOTE: See **page 10** for a list of available models and specifications.

1.0 Safety

⚠ WARNING

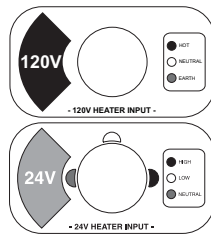


Improper installation, adjustment, alteration, service, or maintenance can cause property damage, serious injury, or death. Read and understand the installation, operating, and maintenance instruction thoroughly before installing or servicing this equipment. Only trained, qualified gas installation and service personnel may install or service this equipment.

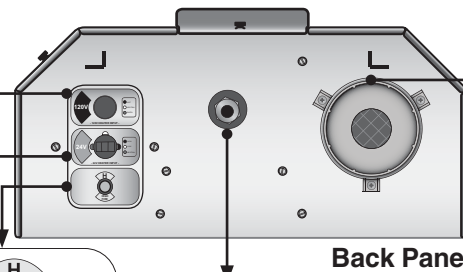
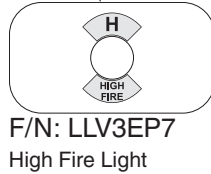
Safety Labels and Their Locations

Product safety signs or labels should be replaced by the product user when they no longer are legible. Contact either your local distributor or the product manufacturer for obtaining replacement signs or labels.

F/N: LLV3EP1
120V Input



F/N: LLV3EP2
(Orange crescent
-with relay option)



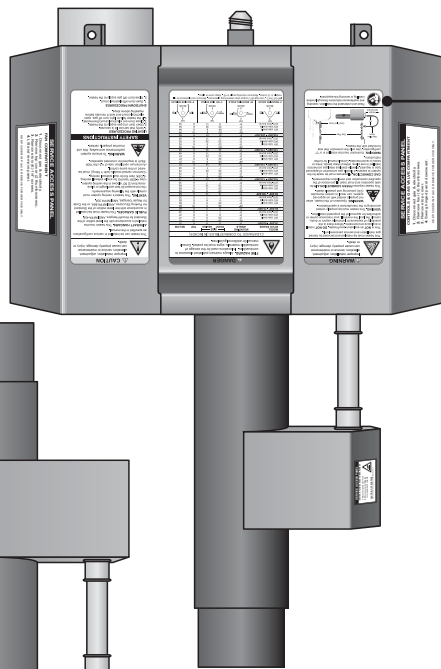
Back Panel

Air Metering Orifice TP-114 TP-3014 3"
F/N: LLAC
Air Metering Orifice



F/N: LLTB018 (Natural Gas)
F/N: LLTB019 (Propane Gas)

Top Panel



⚠ WARNING
Improper installation, adjustment, alteration, service or maintenance can cause property damage, injury or death.

This heater must be installed and serviced by trained gas installation and service personnel only. This is NOT an explosion-proof heater. DO NOT install in explosive environments. Where there is the possibility of exposure to flammable vapors or dusts, consult the local fire marshal, your insurance carrier or authorities for approval of the proposed installation.

VENTING This heater must be properly vented according to the manufacturer's specifications. This heater requires FRESH COMBUSTION AIR for safe operation and must meet all provisions of the local code and ventilation requirements.

GAS CONNECTION Allowances must be made for the system to expand. A flexible gas connection of approved type is required. Flexible stainless steel gas connectors installed in one piece, without sharp bends, kinks or twists is recommended. Consult manual for further instructions.

WARNING: Connector must be installed in a "C" configuration. Use only the connector that was furnished with the heater.

⚠ DANGER
FIRE HAZARD. Always maintain published clearance to combustibles. In locations used for the storage of combustible materials, signs must be posted. Consult manual for additional guidelines.

CLEARANCE TO COMBUSTIBLES (IN INCHES)

MODEL	BTU/Hr RANGE	VENTING	Front	Side	Top	Below
LLV3EP1	10,000	Direct	24"	24"	24"	24"
LLV3EP2	10,000	Direct	24"	24"	24"	24"
LLV3EP3	10,000	Direct	24"	24"	24"	24"
LLV3EP4	10,000	Direct	24"	24"	24"	24"
LLV3EP5	10,000	Direct	24"	24"	24"	24"
LLV3EP6	10,000	Direct	24"	24"	24"	24"
LLV3EP7	10,000	Direct	24"	24"	24"	24"
LLV3EP8	10,000	Direct	24"	24"	24"	24"
LLV3EP9	10,000	Direct	24"	24"	24"	24"
LLV3EP10	10,000	Direct	24"	24"	24"	24"
LLV3EP11	10,000	Direct	24"	24"	24"	24"
LLV3EP12	10,000	Direct	24"	24"	24"	24"
LLV3EP13	10,000	Direct	24"	24"	24"	24"
LLV3EP14	10,000	Direct	24"	24"	24"	24"
LLV3EP15	10,000	Direct	24"	24"	24"	24"
LLV3EP16	10,000	Direct	24"	24"	24"	24"
LLV3EP17	10,000	Direct	24"	24"	24"	24"
LLV3EP18	10,000	Direct	24"	24"	24"	24"
LLV3EP19	10,000	Direct	24"	24"	24"	24"
LLV3EP20	10,000	Direct	24"	24"	24"	24"
LLV3EP21	10,000	Direct	24"	24"	24"	24"
LLV3EP22	10,000	Direct	24"	24"	24"	24"
LLV3EP23	10,000	Direct	24"	24"	24"	24"
LLV3EP24	10,000	Direct	24"	24"	24"	24"
LLV3EP25	10,000	Direct	24"	24"	24"	24"
LLV3EP26	10,000	Direct	24"	24"	24"	24"
LLV3EP27	10,000	Direct	24"	24"	24"	24"
LLV3EP28	10,000	Direct	24"	24"	24"	24"
LLV3EP29	10,000	Direct	24"	24"	24"	24"
LLV3EP30	10,000	Direct	24"	24"	24"	24"
LLV3EP31	10,000	Direct	24"	24"	24"	24"
LLV3EP32	10,000	Direct	24"	24"	24"	24"
LLV3EP33	10,000	Direct	24"	24"	24"	24"
LLV3EP34	10,000	Direct	24"	24"	24"	24"
LLV3EP35	10,000	Direct	24"	24"	24"	24"
LLV3EP36	10,000	Direct	24"	24"	24"	24"
LLV3EP37	10,000	Direct	24"	24"	24"	24"
LLV3EP38	10,000	Direct	24"	24"	24"	24"
LLV3EP39	10,000	Direct	24"	24"	24"	24"
LLV3EP40	10,000	Direct	24"	24"	24"	24"
LLV3EP41	10,000	Direct	24"	24"	24"	24"
LLV3EP42	10,000	Direct	24"	24"	24"	24"
LLV3EP43	10,000	Direct	24"	24"	24"	24"
LLV3EP44	10,000	Direct	24"	24"	24"	24"
LLV3EP45	10,000	Direct	24"	24"	24"	24"
LLV3EP46	10,000	Direct	24"	24"	24"	24"
LLV3EP47	10,000	Direct	24"	24"	24"	24"
LLV3EP48	10,000	Direct	24"	24"	24"	24"
LLV3EP49	10,000	Direct	24"	24"	24"	24"
LLV3EP50	10,000	Direct	24"	24"	24"	24"
LLV3EP51	10,000	Direct	24"	24"	24"	24"
LLV3EP52	10,000	Direct	24"	24"	24"	24"
LLV3EP53	10,000	Direct	24"	24"	24"	24"
LLV3EP54	10,000	Direct	24"	24"	24"	24"
LLV3EP55	10,000	Direct	24"	24"	24"	24"
LLV3EP56	10,000	Direct	24"	24"	24"	24"
LLV3EP57	10,000	Direct	24"	24"	24"	24"
LLV3EP58	10,000	Direct	24"	24"	24"	24"
LLV3EP59	10,000	Direct	24"	24"	24"	24"
LLV3EP60	10,000	Direct	24"	24"	24"	24"
LLV3EP61	10,000	Direct	24"	24"	24"	24"
LLV3EP62	10,000	Direct	24"	24"	24"	24"
LLV3EP63	10,000	Direct	24"	24"	24"	24"
LLV3EP64	10,000	Direct	24"	24"	24"	24"
LLV3EP65	10,000	Direct	24"	24"	24"	24"
LLV3EP66	10,000	Direct	24"	24"	24"	24"
LLV3EP67	10,000	Direct	24"	24"	24"	24"
LLV3EP68	10,000	Direct	24"	24"	24"	24"
LLV3EP69	10,000	Direct	24"	24"	24"	24"
LLV3EP70	10,000	Direct	24"	24"	24"	24"
LLV3EP71	10,000	Direct	24"	24"	24"	24"
LLV3EP72	10,000	Direct	24"	24"	24"	24"
LLV3EP73	10,000	Direct	24"	24"	24"	24"
LLV3EP74	10,000	Direct	24"	24"	24"	24"
LLV3EP75	10,000	Direct	24"	24"	24"	24"
LLV3EP76	10,000	Direct	24"	24"	24"	24"
LLV3EP77	10,000	Direct	24"	24"	24"	24"
LLV3EP78	10,000	Direct	24"	24"	24"	24"
LLV3EP79	10,000	Direct	24"	24"	24"	24"
LLV3EP80	10,000	Direct	24"	24"	24"	24"
LLV3EP81	10,000	Direct	24"	24"	24"	24"
LLV3EP82	10,000	Direct	24"	24"	24"	24"
LLV3EP83	10,000	Direct	24"	24"	24"	24"
LLV3EP84	10,000	Direct	24"	24"	24"	24"
LLV3EP85	10,000	Direct	24"	24"	24"	24"
LLV3EP86	10,000	Direct	24"	24"	24"	24"
LLV3EP87	10,000	Direct	24"	24"	24"	24"
LLV3EP88	10,000	Direct	24"	24"	24"	24"
LLV3EP89	10,000	Direct	24"	24"	24"	24"
LLV3EP90	10,000	Direct	24"	24"	24"	24"
LLV3EP91	10,000	Direct	24"	24"	24"	24"
LLV3EP92	10,000	Direct	24"	24"	24"	24"
LLV3EP93	10,000	Direct	24"	24"	24"	24"
LLV3EP94	10,000	Direct	24"	24"	24"	24"
LLV3EP95	10,000	Direct	24"	24"	24"	24"
LLV3EP96	10,000	Direct	24"	24"	24"	24"
LLV3EP97	10,000	Direct	24"	24"	24"	24"
LLV3EP98	10,000	Direct	24"	24"	24"	24"
LLV3EP99	10,000	Direct	24"	24"	24"	24"
LLV3EP100	10,000	Direct	24"	24"	24"	24"

⚠ CAUTION
Improper installation, adjustment, alteration, service or maintenance can cause property damage, injury or death.

This heater can be installed in various configurations as specified in the manual.

AIRCRAFT HANGARS. This heater must be installed in accordance with the latest edition of the Standard for Aircraft Hangars, ANSI/NFPA 405.

PUBLIC GARAGES. This heater must be installed in accordance with the latest edition of the Standard for Parking Structures, ANSI/NFPA 88A, or the Code for Repair Garages, ANSI/NFPA 30A.

VENTING. This heater's venting system must comply with the following requirements:
 • Do not exceed 20 feet vent length or place more than 21 80° elbows in the venting system.
 • Use AODK Vent Kit for single spool venting.
 • AODK Vent Kit for dual spool venting.
 • Common vented models (with "Y" fitting) must be wired on the same control.
 • Minimum ventilation rate of 4.5 cfm/1000 Btu/h is required for unvented operation.

WARNING: To ensure system performance and safety, this unit must be properly vented.

SAFETY INSTRUCTIONS

LIGHTING PROCEDURES

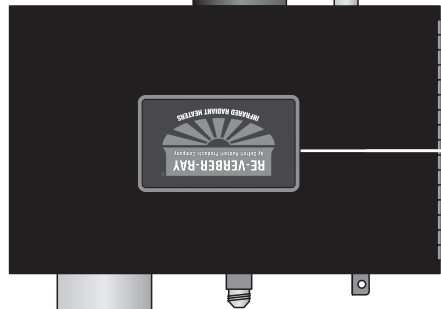
1. Verify that service kit is secured.
2. Open (turn on) gas supply to the heater.
3. Close (turn on) electrical circuit (thermostat).
4. If the heater fails to light, turn off gas, open electrical circuit and wait 5 minutes before repeating above steps.

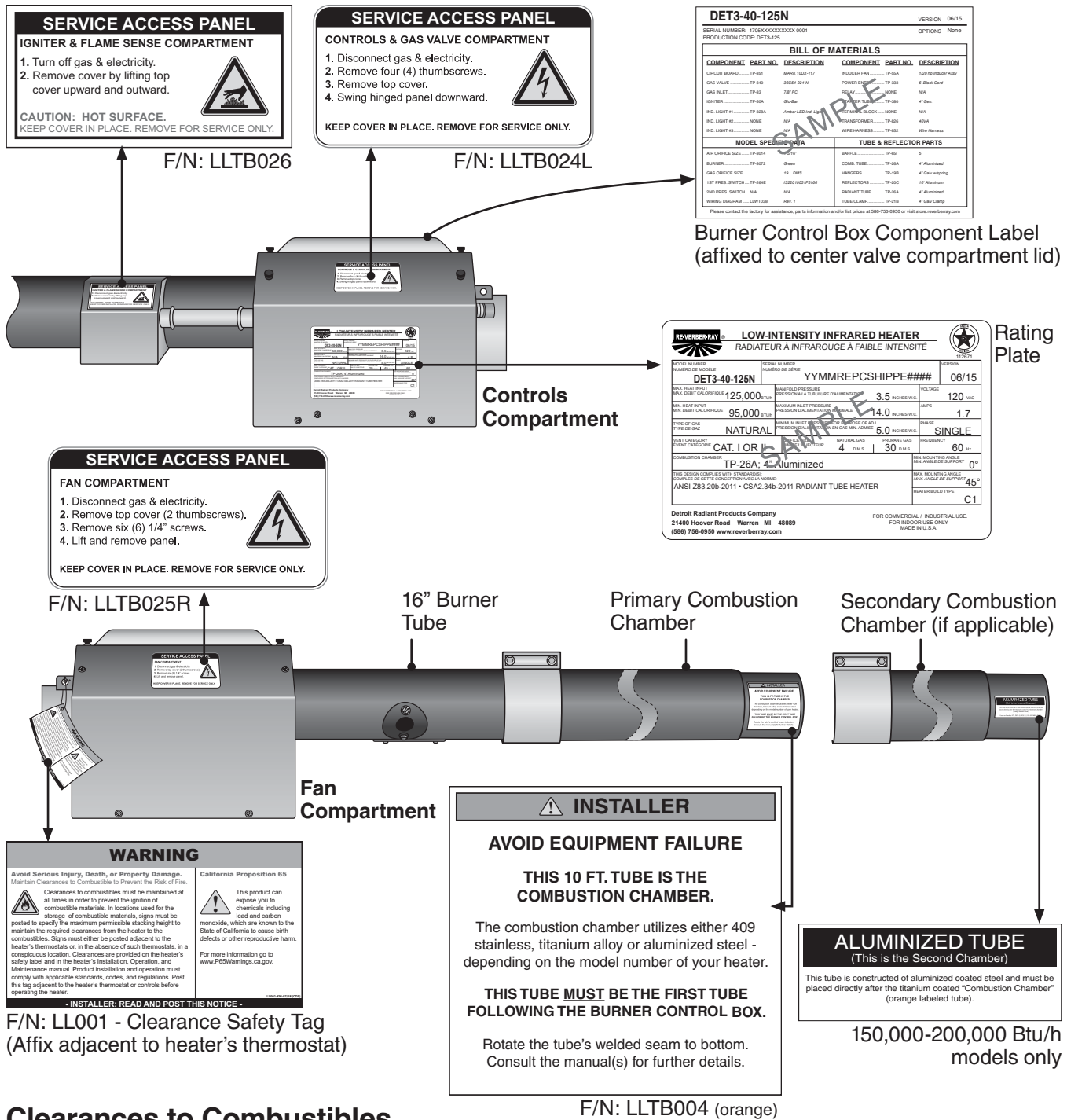
SHUTDOWN PROCEDURES

1. Open (turn off) electrical circuit.
2. Close (turn off) gas supply to the heater.

F/N: LLTCL006L, LLTCL001C/R
Clearances to Combustibles Labels

Bottom Panel





Clearances to Combustibles

WARNING

Placement of explosive objects, flammable objects, liquids, and vapors close to the heater may result in explosion, fire, property damage, serious injury, or death. Do not store, or use, explosive objects, liquids, or vapor in the vicinity the heater.

Clearance to Combustibles is defined as **the minimum distance that must exist between the tube surface, or reflector, and any combustible items** (see Figure 1.1). It also pertains to the distance that must be maintained from moving objects around the tube heater.

When installing the tube heater system, clearances to combustibles for the model tube heater and configuration must be maintained. Refer to Chart 1.1 on page 5 to determine the required distances for your model.

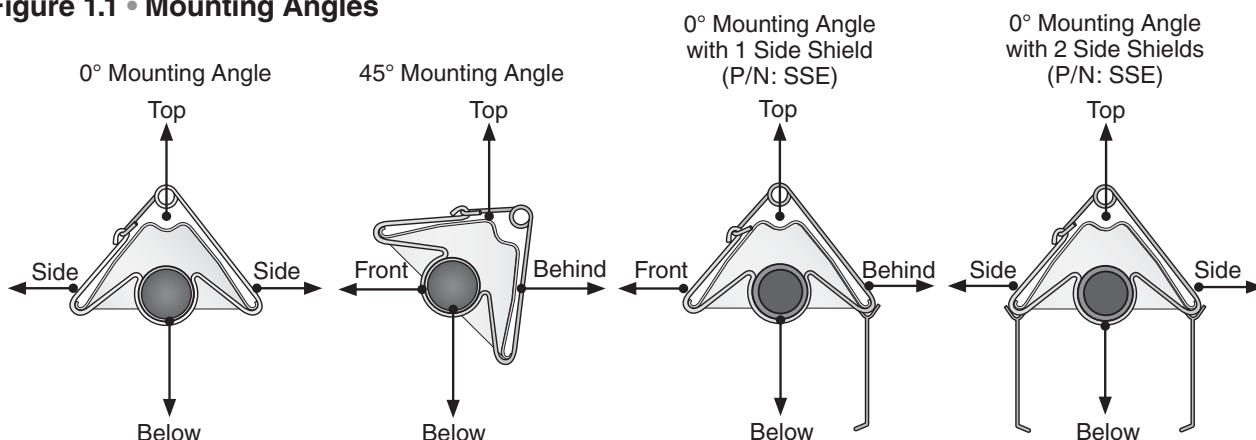
Chart 1.1 • Clearances to Combustibles in Inches (see Figure 1.1 for Mounting Angles)

Model Number	Mounting Angle*	Side		Top	Below	
		Front	Behind			
DET3 (20, 30, 40) - (65, 75) [N, P]	0°	9	9	6	60	
	45°	39	8	10	60	
	with 1 side shield	0°	29	8	6	60
	with 2 side shields	0°	9	9	6	60
	20 ft. from burner	0°	7	7	6	30
DET3 (30, 40) - 100 [N, P]	0°	14	14	6	66	
	45°	39	8	10	66	
	with 1 side shield	0°	29	8	6	66
	with 2 side shields	0°	16	16	6	66
	20 ft. from burner	0°	7	7	6	30
DET3 (30, 40, 50) - 125 [N, P]	0°	20	20	6	76	
	45°	58	8	10	76	
	with 1 side shield	0°	42	8	6	76
	with 2 side shields	0°	20	20	6	76
	20 ft. from burner	0°	7	7	6	30
DET3 (40, 50, 60) - 150 [N, P]	0°	24	24	6	81	
	45°	58	8	10	81	
	with 1 side shield	0°	42	8	6	81
	with 2 side shields	0°	23	23	6	81
	20 ft. from burner	0°	11	11	6	44
DET3 (40, 50, 60, 70) - 175 [N, P]	0°	34	34	6	92	
	45°	63	8	10	92	
	with 1 side shield	0°	50	8	6	92
	with 2 side shields	0°	30	30	6	92
	20 ft. from burner	0°	11	11	6	44
DET3 (50, 60, 70) - 200 [N, P]	0°	41	41	6	94	
	45°	63	8	10	94	
	with 1 side shield	0°	54	8	6	94
	with 2 side shields	0°	30	30	6	94
	20 ft. from burner	0°	11	11	6	44

* Heaters mounted on an angle between 0° and 45° must maintain clearances posted for 0° or 45°, whichever is greater.

The stated clearances to combustibles represents a surface temperature of 90°F (50°C) above room temperature. Building materials with a low heat tolerance (such as plastics, vinyl siding, canvas, tri-ply, etc.) may be subject to degradation at lower temperatures. It is the installer’s responsibility to assure that adjacent materials are protected from degradation.

Figure 1.1 • Mounting Angles



2.0 Installation

⚠ WARNING



Improper installation, adjustment, alteration, service, or maintenance can cause property damage, serious injury, or death. Read and understand the installation, operating, and maintenance instructions thoroughly before installing or servicing this equipment. Only trained, qualified gas installation and service personnel may install or service this equipment.

Not for residential use! Do not use this heater in the home, sleeping quarters, attached garages, etc. **Installation of a commercial tube heater system in residential indoor spaces may result in property damage, serious injury, or death.**

Instructions for the following are detailed in the Tube Heater General Manual:

- Design considerations
- Hanger suspension and placement
- Tube layout and assembly
- Burner control box suspension
- Reflectors (and accessories)
- Venting and combustion air intake
- Gas requirements
- Baffle assembly

NOTE: Electronic versions of all manuals are available at www.detroitradiant.com

Gas Requirements

Type of Gas	Required Manifold Pressure	Minimum Inlet Pressure	Maximum Inlet Pressure
Natural	3.5 inches W.C.	5.0 inches W.C.	14.0 inches W.C.
Propane	10.0 inches W.C.	11.0 inches W.C.	14.0 inches W.C.



IMPORTANT: Consult the Tube Heater General Manual for gas connection requirements.

Electrical Requirements

- 120 VAC - 60 Hz, GND, 3-wire
- 24 VAC thermostat connection
- Starting current 1.7 amps
- Running current 1.1 amps

NOTICE

Connecting the thermostat with a voltage other than 24VAC may damage the heater. The DET3 series requires a 24 VAC connection to the thermostat. The DET3 series is equipped with an internal relay board. A field supplied external transformer must be installed, see wiring diagram (Figures 2.1A-B).

Wiring

⚠ WARNING

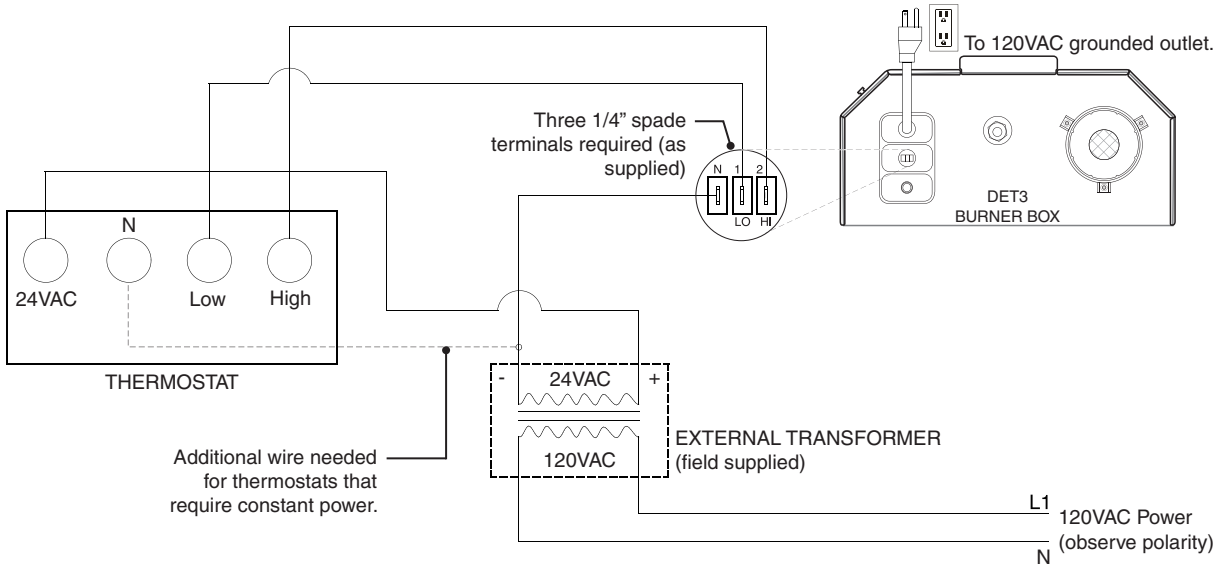


Electric Shock

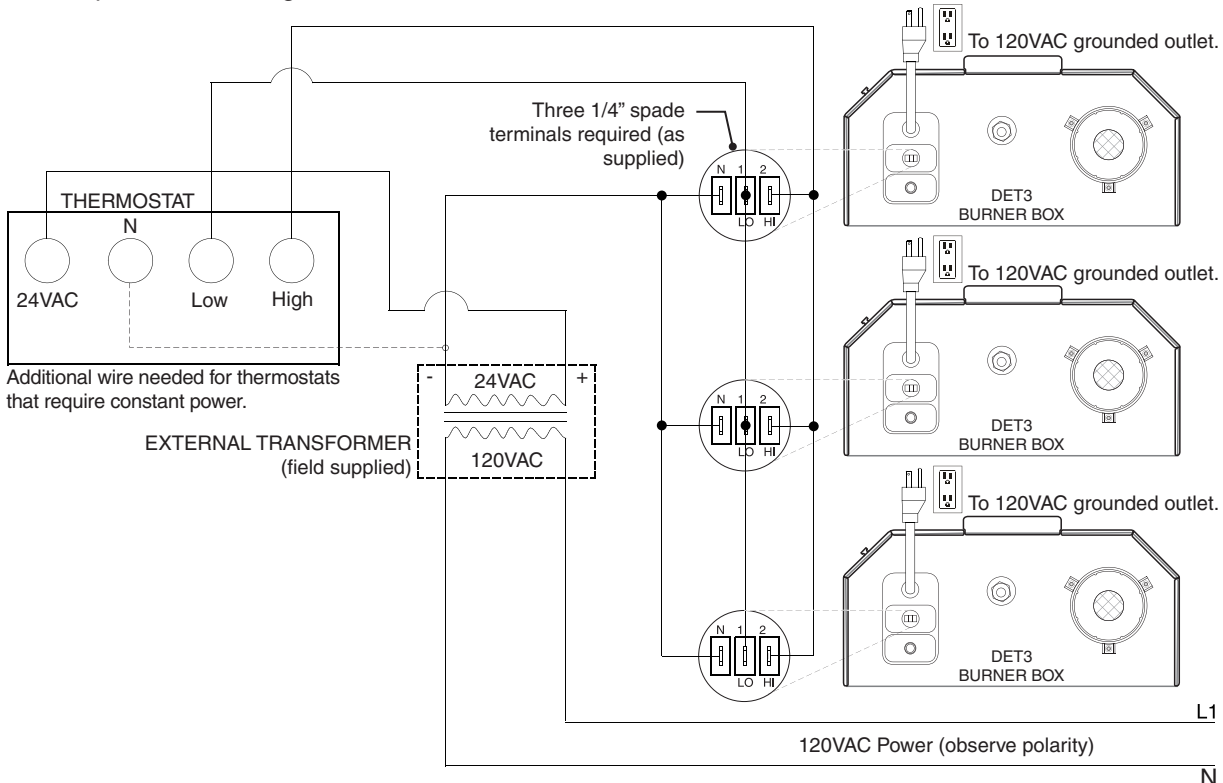
Field wiring to the tube heater must be connected and grounded in accordance with national, state, provincial, and local codes, and to the guidelines in the Tube Heater General Manual and Series Insert Manual. In the United States refer to the most current revisions to the ANSI/NFPA 70 Standard, and in Canada refer to the most current revisions to the CSA C22.1 Part I Standard.

Figure 2.1 • Field Wiring Diagrams

A. Single Heater, Single Thermostat



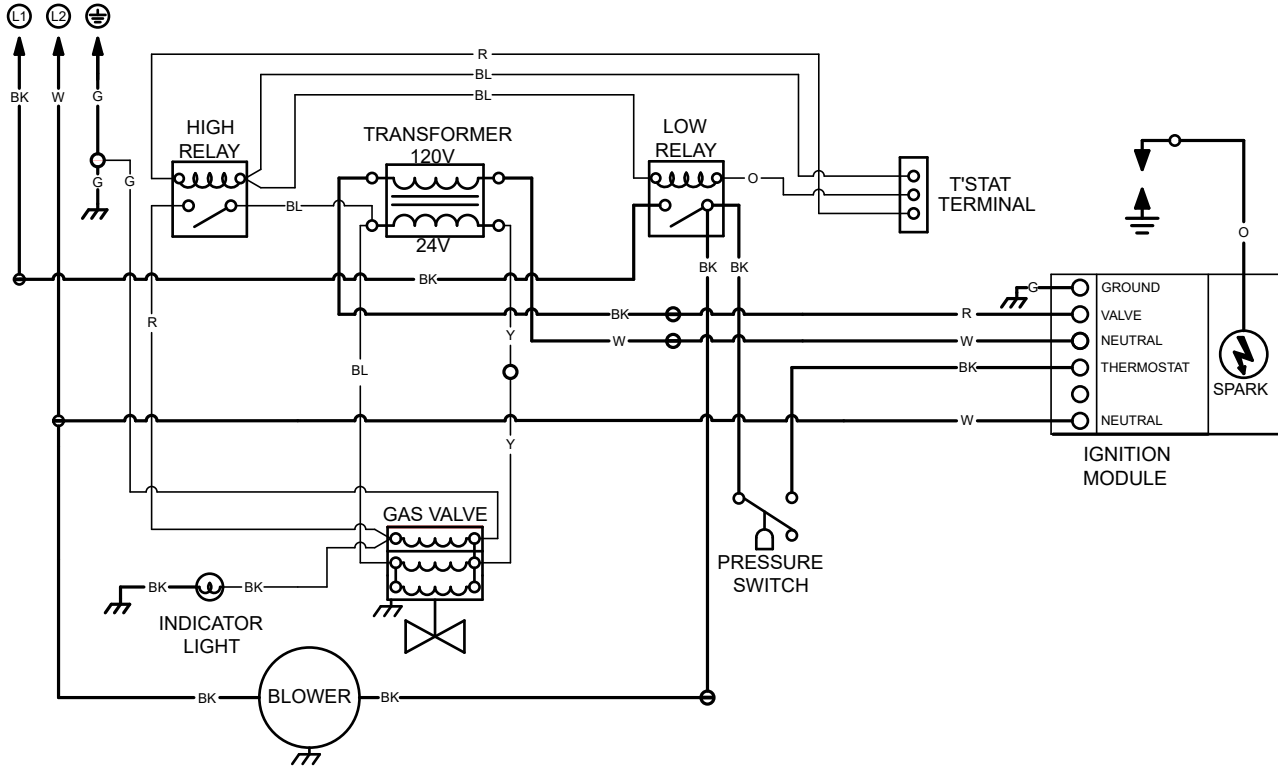
B. Multiple Heaters, Single Thermostat



Before field wiring this appliance - Check existing wiring; replace if necessary.

NOTE: If any of the original wire supplied with the appliance must be replaced, it must be replaced with wiring material having a rating of at least 600 V and 105° C.

Figure 2.2 • Internal Wiring Diagram



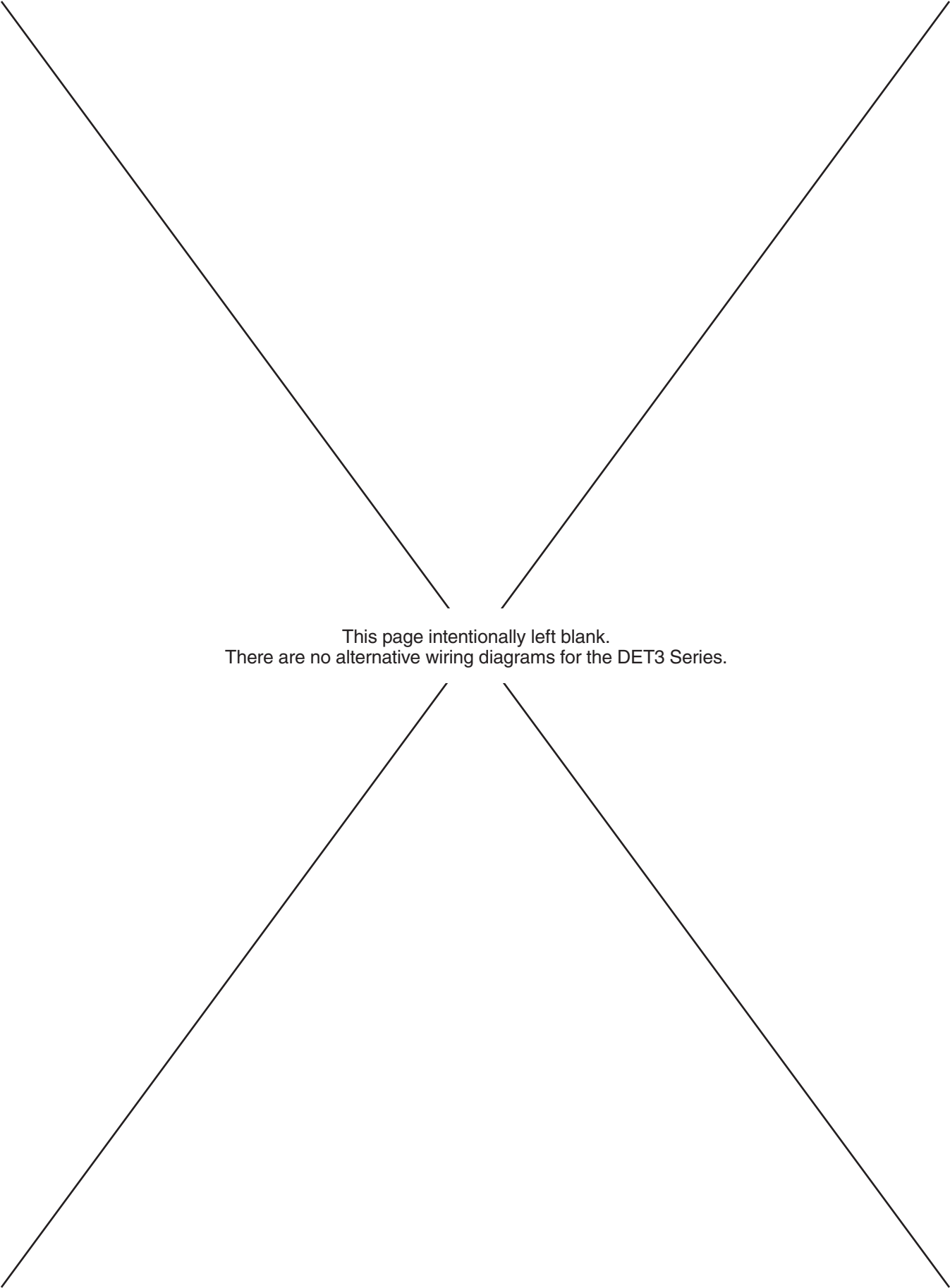
WIRING INFORMATION:

LINE VOLTAGE:

- FACTORY STANDARD _____
- FACTORY OPTION - - - - -
- FIELD INSTALLED - - - - -

LOW VOLTAGE:

- FACTORY STANDARD _____
- FACTORY OPTION - - - - -
- FIELD INSTALLED - - - - -



This page intentionally left blank.
There are no alternative wiring diagrams for the DET3 Series.

Specifications

Chart 2.1 • Specifications

Model Number	Gas Type (Select One)	BTU/h (High Fire)	BTU/h (Low Fire)	Straight Length	U-Tube Length	Weight (lbs.)	Recommended Mounting Height [^]	Combustion Chamber(s) (Black Coated)	Radiant Emitter Tube(s) (Uncoated)	36" Baffle Quantity
DET3-20-65	Nat. or Prop.	65,000	50,000	21'-9"	13'-1"	120	9' to 14'	Alum	HRT	5
DET3-20-75	Nat. or Prop.	75,000	50,000	21'-9"	13'-1"	120	10' to 15'	Alum	HRT	5
DET3-30-65	Nat. or Prop.	65,000	50,000	31'-5"	**17'-9"	160	10' to 15'	Alum	HRT	4
DET3-30-75	Nat. or Prop.	75,000	50,000	31'-5"	**17'-9"	160	11' to 18'	Alum	HRT	5
DET3-30-100	Nat. or Prop.	100,000	65,000	31'-5"	**17'-9"	160	12' to 20'	Alum	HRT	5
DET3-30-125	Nat. or Prop.	125,000	82,000	31'-5"	**17'-9"	160	13' to 23'	Alum	HRT	6
DET3-40-65	Nat. or Prop.	65,000	50,000	41'-1"	22'-9"	190	11' to 18'	Alum	HRT	3
DET3-40-75	Nat. or Prop.	75,000	50,000	41'-1"	22'-9"	190	11' to 18'	Alum	HRT	4
DET3-40-100	Nat. or Prop.	100,000	65,000	41'-1"	22'-9"	190	12' to 20'	Alum	HRT	4
DET3-40-125	Nat. or Prop.	125,000	82,000	41'-1"	22'-9"	190	13' to 23'	Alum	HRT	5
DET3-40-150*	Nat. or Prop.	150,000	100,000	41'-1"	22'-9"	190	14' to 25'	Titan/Alum	HRT	5
DET3-40-175*	Nat. or Prop.	175,000	125,000	41'-1"	22'-9"	190	16' to 30'	Titan/Alum	HRT	5
DET3-50-125	Nat. or Prop.	125,000	82,000	50'-9"	**27'-5"	235	15' to 27'	Alum	HRT	3
DET3-50-150*	Nat. or Prop.	150,000	100,000	50'-9"	**27'-5"	235	15' to 27'	Titan/Alum	HRT	3
DET3-50-175*	Nat. or Prop.	175,000	125,000	50'-9"	**27'-5"	235	16' to 30'	Titan/Alum	HRT	3
DET3-50-200*	Nat. or Prop.	200,000	145,000	50'-9"	**27'-5"	235	17' to 35'	Titan/Alum	HRT	2
DET3-60-150*	Nat. or Prop.	150,000	100,000	60'-5"	32'-5"	265	16' to 30'	Titan/Alum	HRT	2
DET3-60-175*	Nat. or Prop.	175,000	125,000	60'-5"	32'-5"	265	16' to 30'	Titan/Alum	HRT	2
DET3-60-200*	Nat. or Prop.	200,000	145,000	60'-5"	32'-5"	265	17' to 35'	Titan/Alum	HRT	2
DET3-70-175*	Nat. or Prop.	175,000	125,000	70'-1"	**37'-3"	300	19' to 42'	Titan/Alum	HRT	2
DET3-70-200*	Nat. or Prop.	200,000	145,000	70'-1"	**37'-3"	300	19' to 42'	Titan/Alum	HRT	2

* Model requires stainless steel tube clamp (P/N: TP-220) to be located at the seam between the primary combustion chamber and the secondary combustion tube downstream of the burner control box.

** Model requires 5EA-SUB accessory package when installing in a 'U' configuration (P/N: TF1B).

[^] Factory recommended mounting heights are listed as a guideline.

IMPORTANT: Reference box label to determine the quantity of required baffle sections for each model heater.

HRT = Uncoated hot-rolled steel.

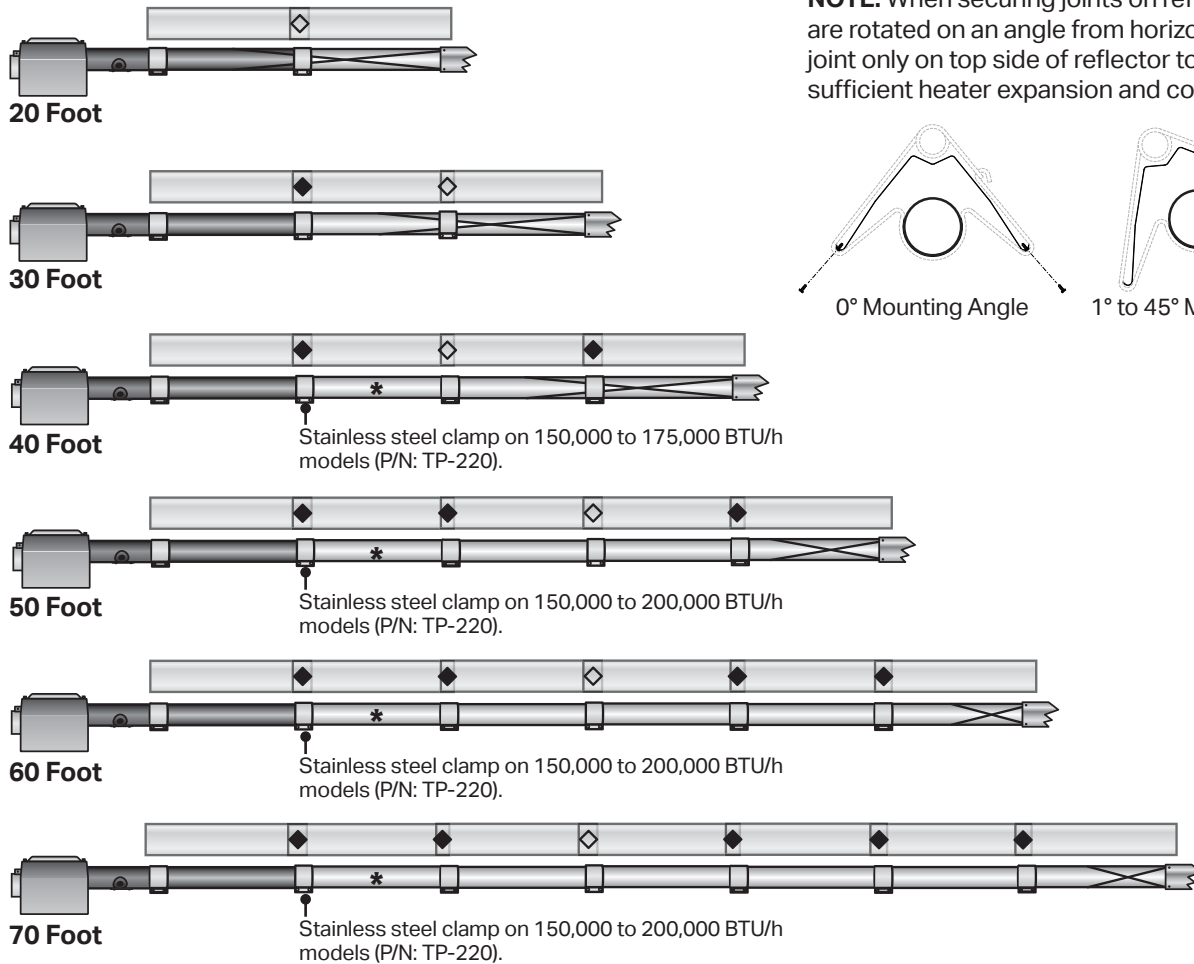
Alum = Black coated aluminized treated steel.

Titan = Black coated titanium stabilized aluminized steel.

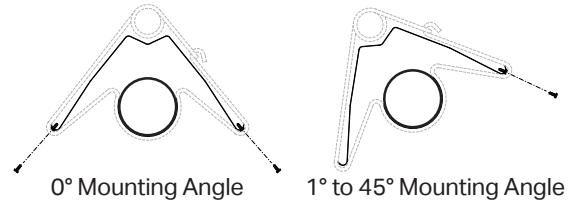
Tube Installation Sequence

Figure 2.4 • Tube Installation Sequence

Important! The combustion chamber(s) & radiant tube section(s) must be installed in the following order.



NOTE: When securing joints on reflectors which are rotated on an angle from horizontal, secure joint only on top side of reflector to allow for sufficient heater expansion and contraction.



Key	
	Burner Control Box w/16 in. Burner Tube
	Expansion Joint on Reflectors
	Secured Joint on Reflectors (see note)
	Primary Combustion Chamber with Clamp
	Hot-Rolled Steel Radiant Emitter Tube
	Baffle Location (Refer to Page 10 for correct baffle quantity.)
	Secure vent material to exchanger with three #8 sheet metal screws. Seal with high temperature silicone sealant. Do not use tube clamp.
* A secondary combustion chamber is installed as the second tube downstream from the burner control box on 150,000 to 200,000 BTU/h models.	

3.0 Operation

⚠ WARNING



This heater must be installed and serviced by trained gas installation and service personnel only.

Do not bypass any safety features or the heater’s built in safety mechanisms will be compromised.

NOTE: Reference Tube Heater General Manual for installation requirements.

Sequence of Operation

Two voltages (120 VAC supply and 24 VAC control) must be supplied to the DET3 series burner control box for proper operation.

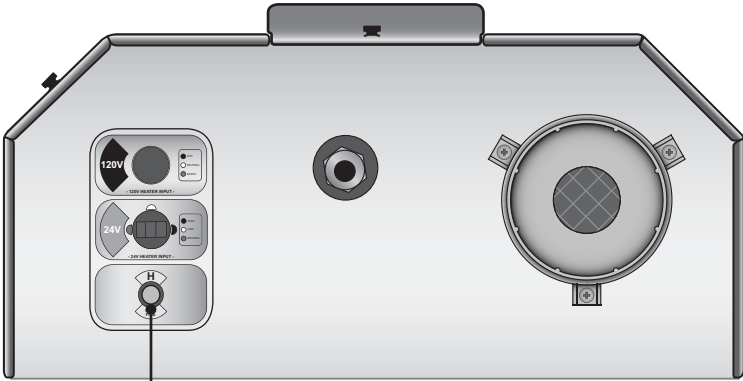
Starting Circuit: Upon a call for heat, the low fire relay is energized by 24 VAC from the thermostat. The relay is closed sending 120 VAC to the blower beginning the sequence of operation.

Air pressure generated by the blower causes the normally open pressure switch to close, sending power to the ignition module. After a seven-second pre-purge, the spark electrode, transformer and gas valve are simultaneously energized. The trial for ignition is 15 seconds.

Single Stage Running Circuit: After ignition, the electrode monitors burner flame. If sense of flame is lost, the control immediately disrupts power to the gas valve and then re-cycle the unit (identical to the starting sequence). If flame sense is not established within 15 seconds, the heater will attempt two (2) additional ignition sequences before proceeding to lockout mode. The control can be reset by briefly interrupting the power source.

Two Stage Running Circuit: High fire operation is actuated by the thermostat sending a 24 VAC signal to the high fire relay. The energized coil of the relay is closed, allowing 24 VAC to continue onto the high fire of the gas valve.

Figure 3.1 • Operational Indicator Light



Light 1
Indicates High
Fire Mode

Thermostat

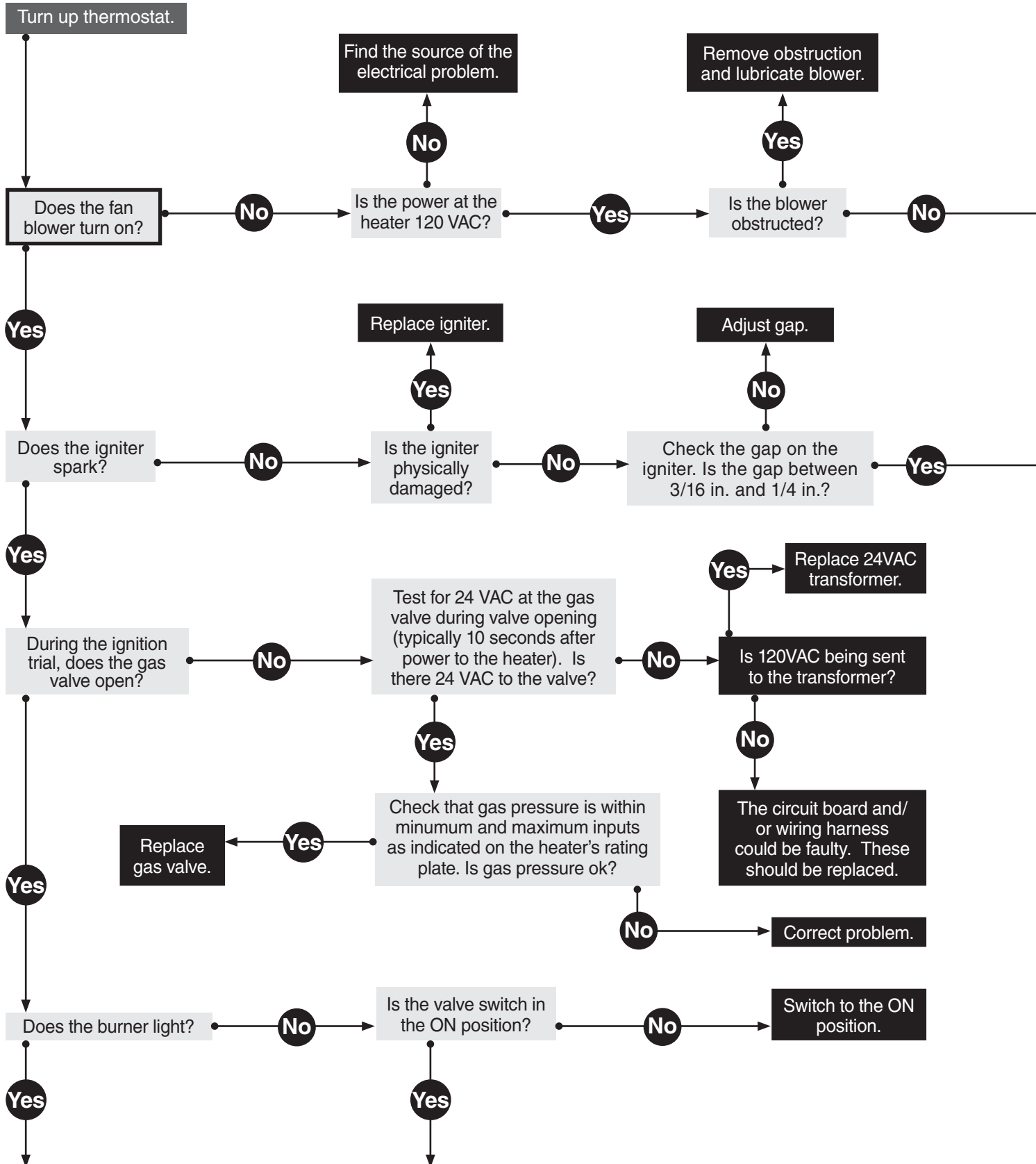
NOTE: Different thermostats operate according to their particular features. Refer to thermostat specifications for details.

DET3 series heaters require a 24 VAC, two stage thermostat to operate. The burner control box is equipped with a round terminal strip that accepts three (3) 1/4 in. female spade terminals. Do not supply 120 VAC to the 24 VAC connection.

Example: Desired room temperature is 65°F. The preset differential of the thermostat is 1°F.
The preset differential for High fire mode is 3°F.

When the temperature drops below the Low Fire preset differential of the thermostat (63°F), Low Fire will activate. If the temperature continues to drop below the preset differential for High Fire, High Fire will activate bringing the temperature back up to the Low Fire preset quickly.

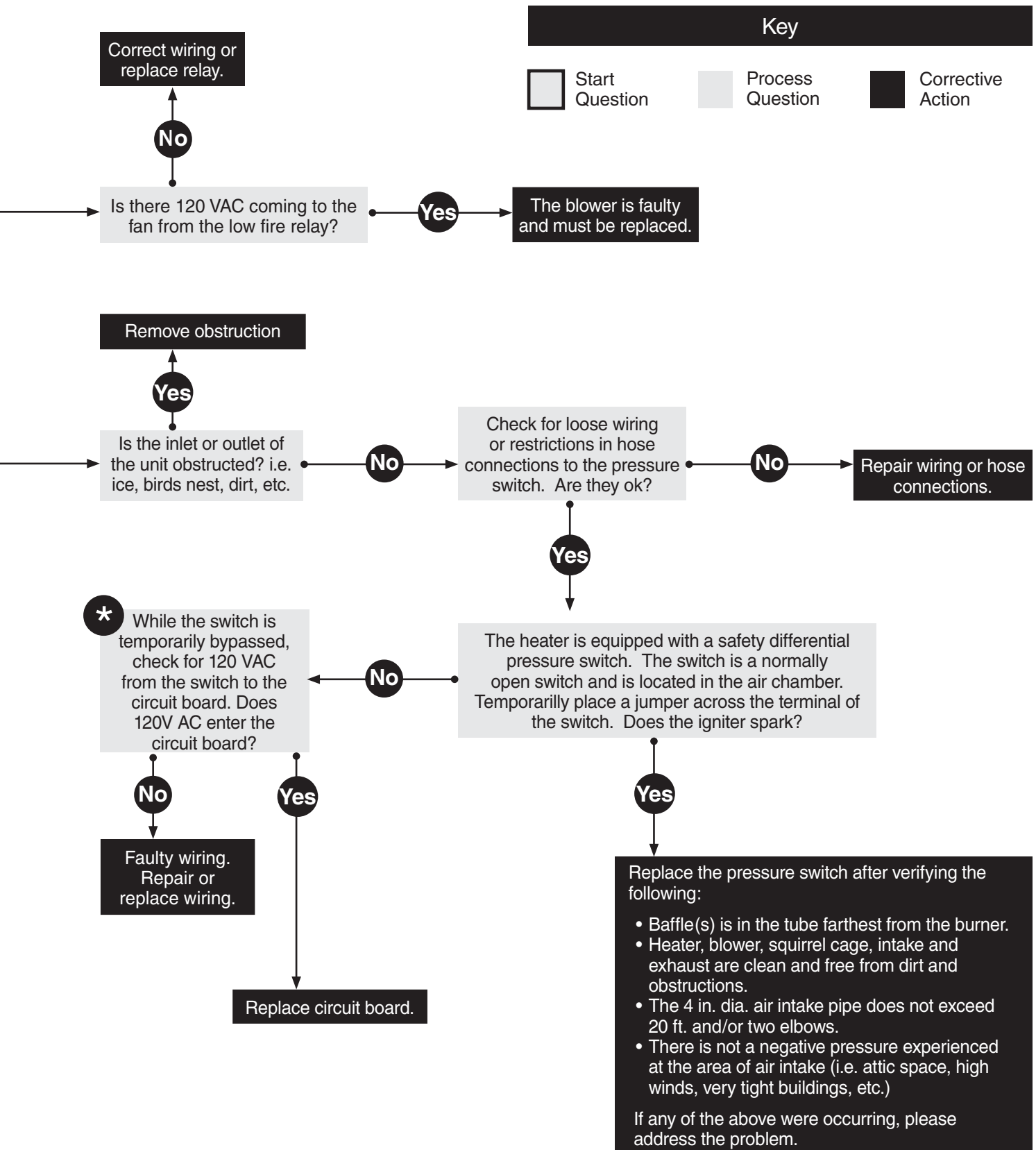
4.0 Troubleshooting Guide



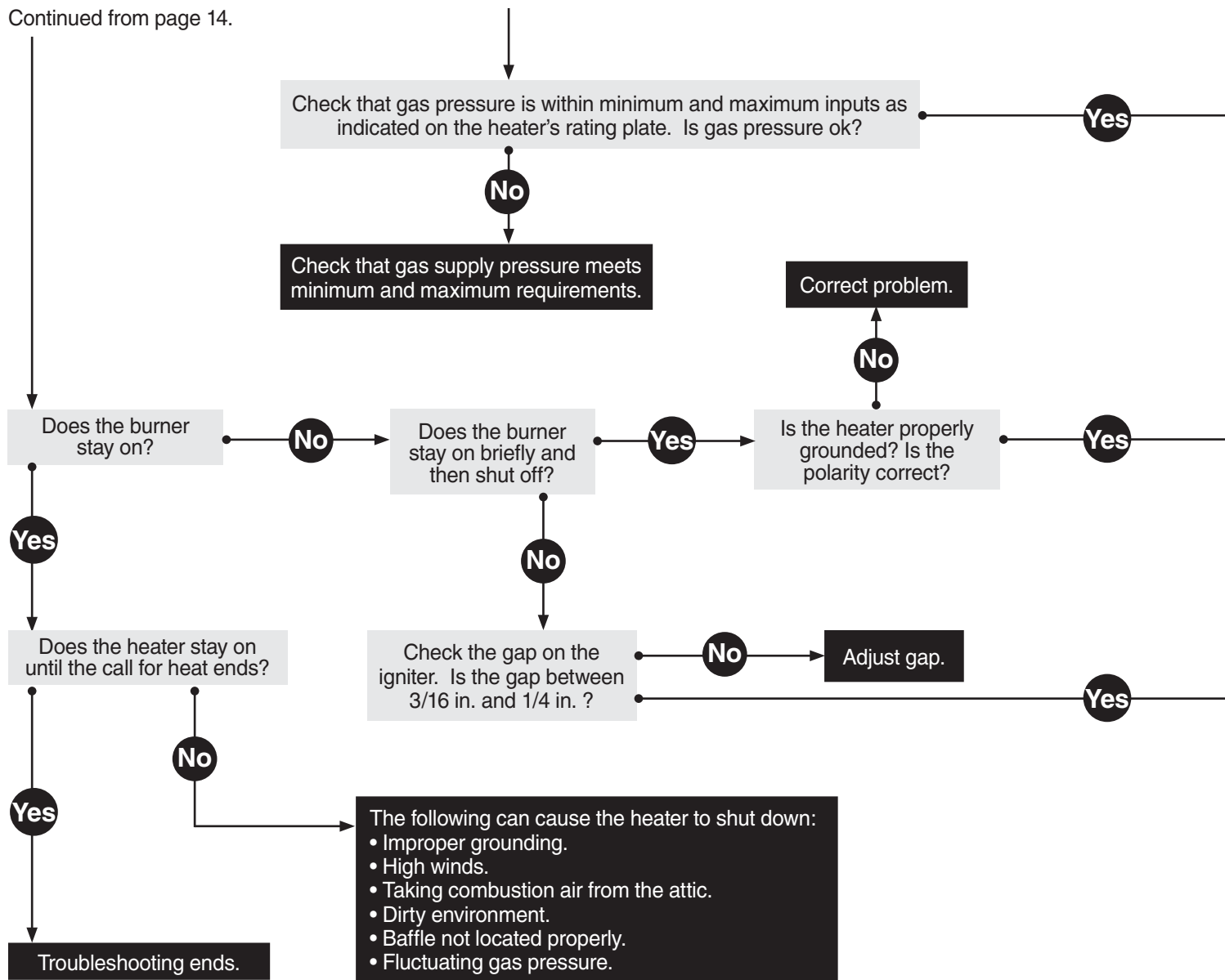
Continued on page 16.

***NOTICE**

Bypassing any switch is intended for testing purposes only. Do not leave switch bypassed during normal operation or the heater's built-in safety mechanisms will be compromised.

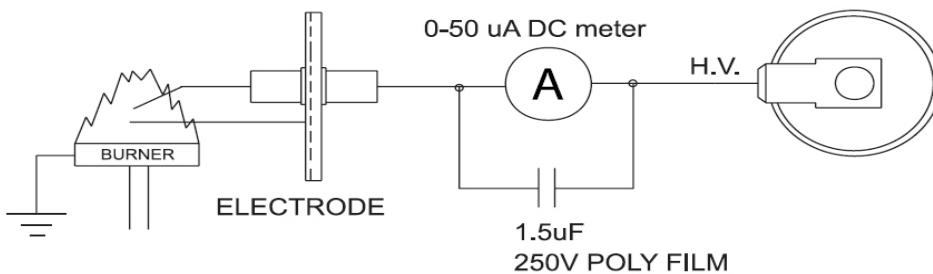


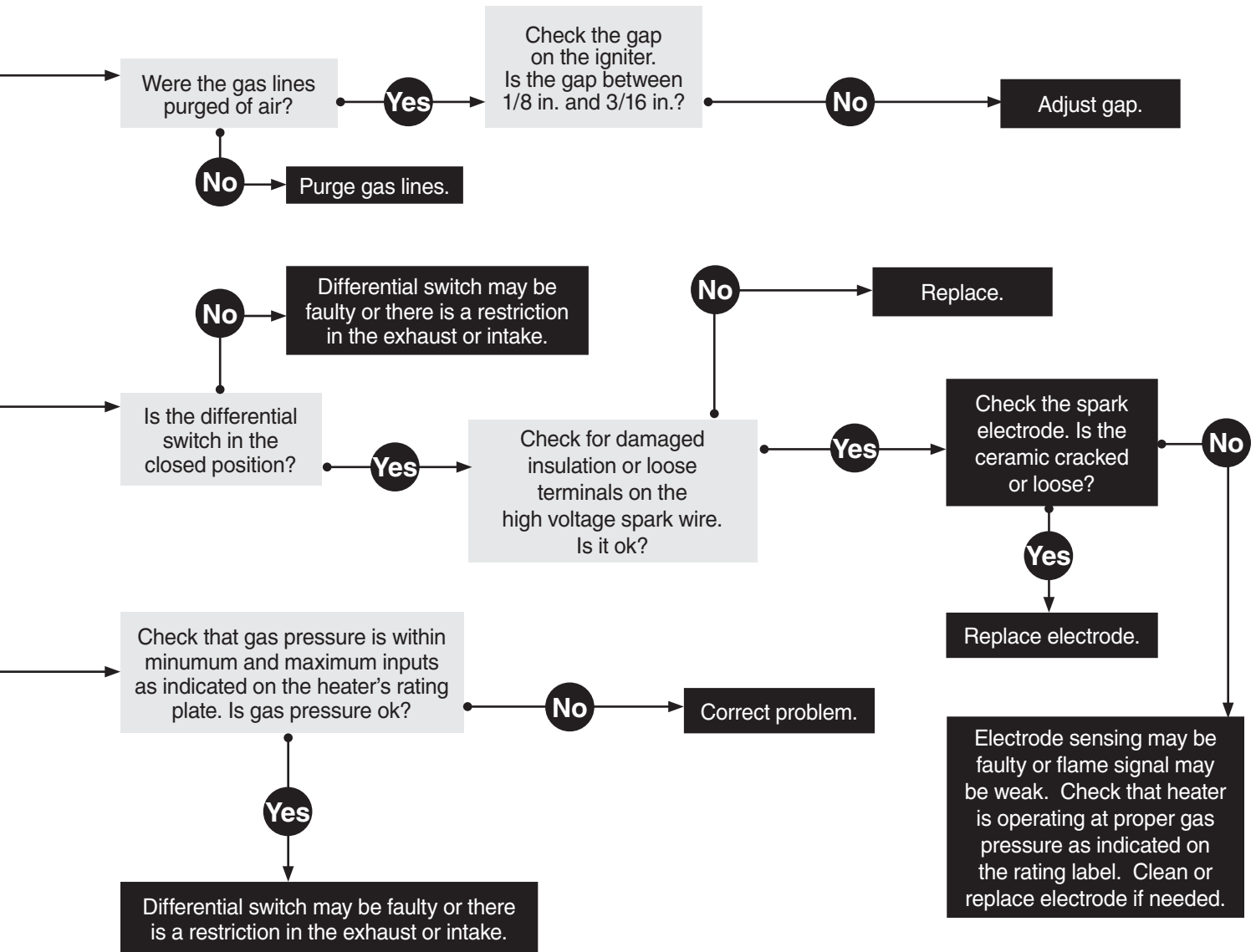
Continued from page 14.



Flame Current Check: Single Spark & Sense

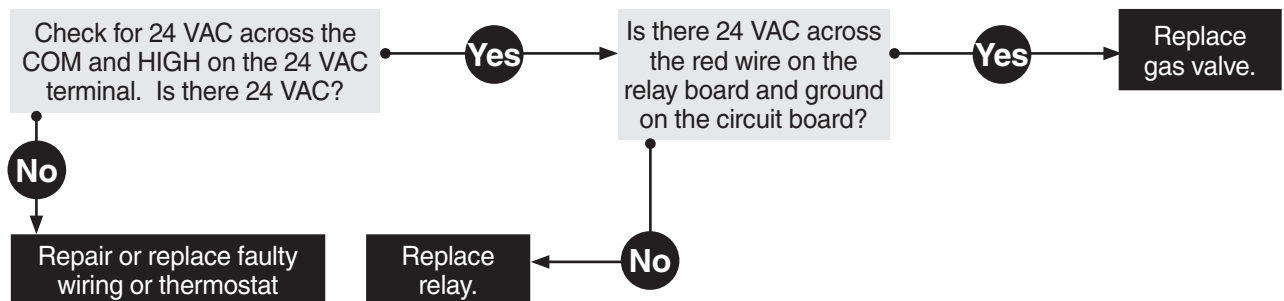
To measure flame current, disconnect input voltage, then insert a 0-50 μA DC meter and capacitor in series with the spark electrode as shown below. Reconnect input voltage and initiate call for heat. After sparking is complete and flame is established, meter should read 1.0 μA or higher while flame is established. If meter reads below "0" on the scale, meter leads are reversed. Disconnect power and reconnect meter lead for proper polarity.





If heater does not enter high fire mode, check the following:

NOTE: To confirm the heater is not in high-fire mode, check the manifold pressure (3.5 inches W.C. natural gas or 10 inches W.C. propane gas). If the indicator light is not illuminated, it is faulty and should be replaced. If the manifold pressure ranges from 2.3 to 2.8 inches W.C. natural gas (model dependent) and 6.0 to 7.5 inches W.C. propane gas (model dependent), the heater is in low fire mode and the troubleshooting steps described below should be followed.



5.0 Parts

Figure 5.1 • Burner Assembly Components

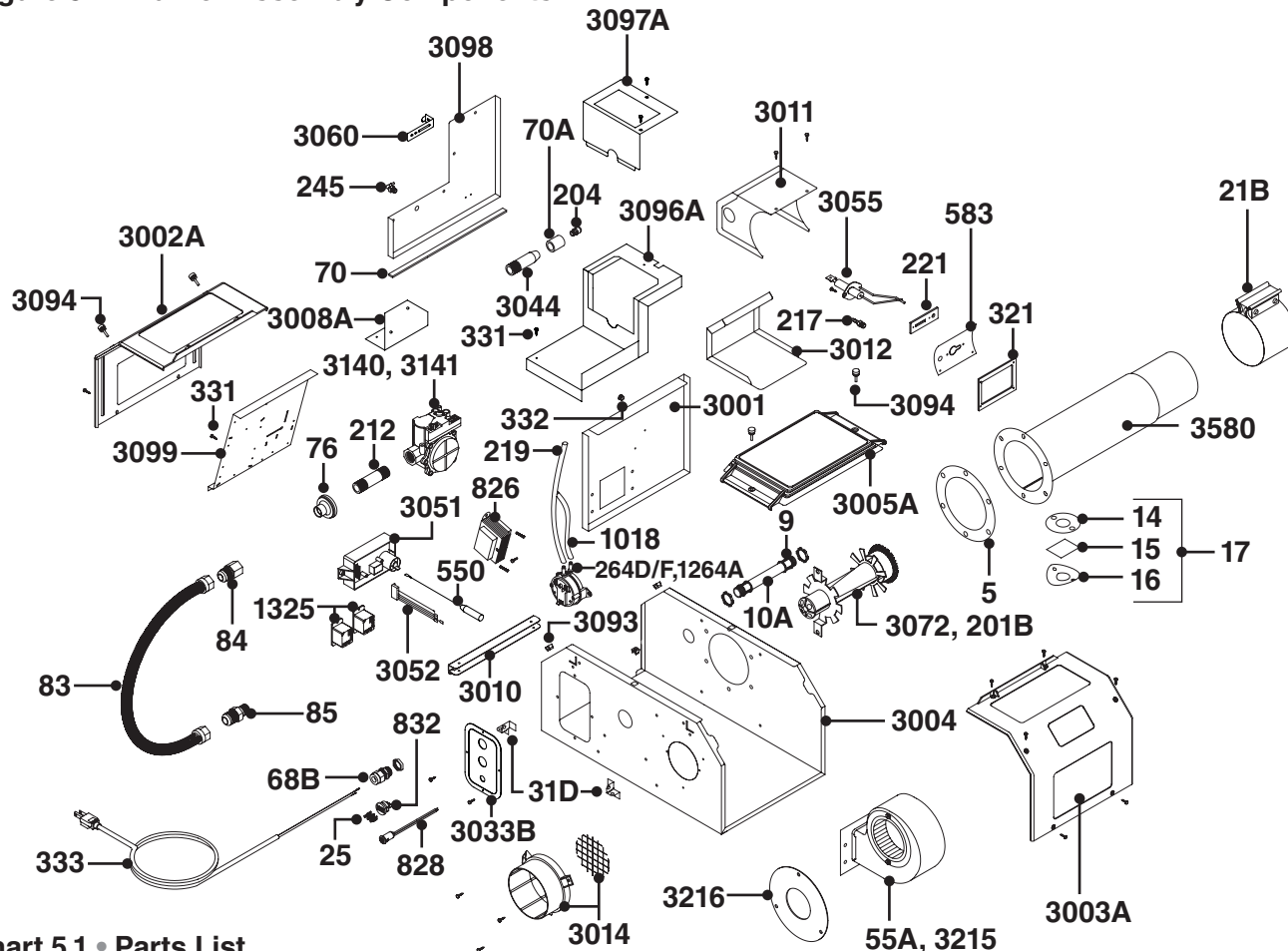


Chart 5.1 • Parts List

Part #	Description	Part #	Description
TP-5	Flange Gasket	TP-70A	1 in. Control Box Gasket (6 inches)
TP-9	Conduit Coupling	TP-76	Rubber Grommet
TP-10A	Conduit 4" x 3/4"	TP-82	Reflector Center Support
TP-14	Sight Glass Gasket	TP-83	Stainless Steel Flexible Gas Connector
TP-15	Sight Glass	TP-84	1/2 in. Female/Male Flare Fitting
TP-16	Sight Glass Washer	TP-85	1/2 in. Male/Male Flare Fitting
TP-17	Sight Glass Kit	TP-105	Reflector End Cap
TP-19B	4 in. Wire Hanger with Tension Spring	TP-106	Reflector End Cap Clips (8 pcs.)
TP-20C	10 ft. Aluminum Reflector	TP-113	Reflector Tension Spring
TP-20D*	10 ft. Stainless Steel Reflector	TP-201B	V.3 Mid-High Burner (Color Code - TAN)
TP-21B	4 in. Tube Clamp	TP-204	Gas Orifice - Consult Factory
TP-25	1/4 in. Female Spade Terminal (Qty. 3)	TP-212	1/2" x 3" Pipe Nipple
TP-26A	10 ft. Aluminized Combustion Tube	TP-217	Brass Pressure Switch Barb Fitting
TP-26B	10 ft. Titanium Primary Combustion Tube	TP-219	Differential Vinyl Sensing Tube
TP-26C	10 ft. Uncoated Hot Rolled Radiant Tube	TP-220	4 in. Dia. Stainless Steel Tube Clamp
TP-31D	Mounting Bracket (Qty. 2)	TP-221	Spark Igniter Mounting Bracket Gasket
TP-55A	1/20 hp Inducer Assembly (50-150 MBH)	TP-245	3/16" X 1/8" Plastic Gas Valve 90° Vent
TP-65I	36 in. Interlocking Turbulator Baffle Section	TP-264D	Differential Pressure Switch, 60 to 75 MBH
TP-68B	Large Strain Relief Bushing	TP-264F	Differential Pressure Switch, 150 to 200 MBH
TP-70	1/2 in. Control Box Gasket (10.3 inches)	TP-321	Ignition Plate Gasket

* Optional upgrade or add-on item.

Figure 5.2 • Tube and Reflector Components

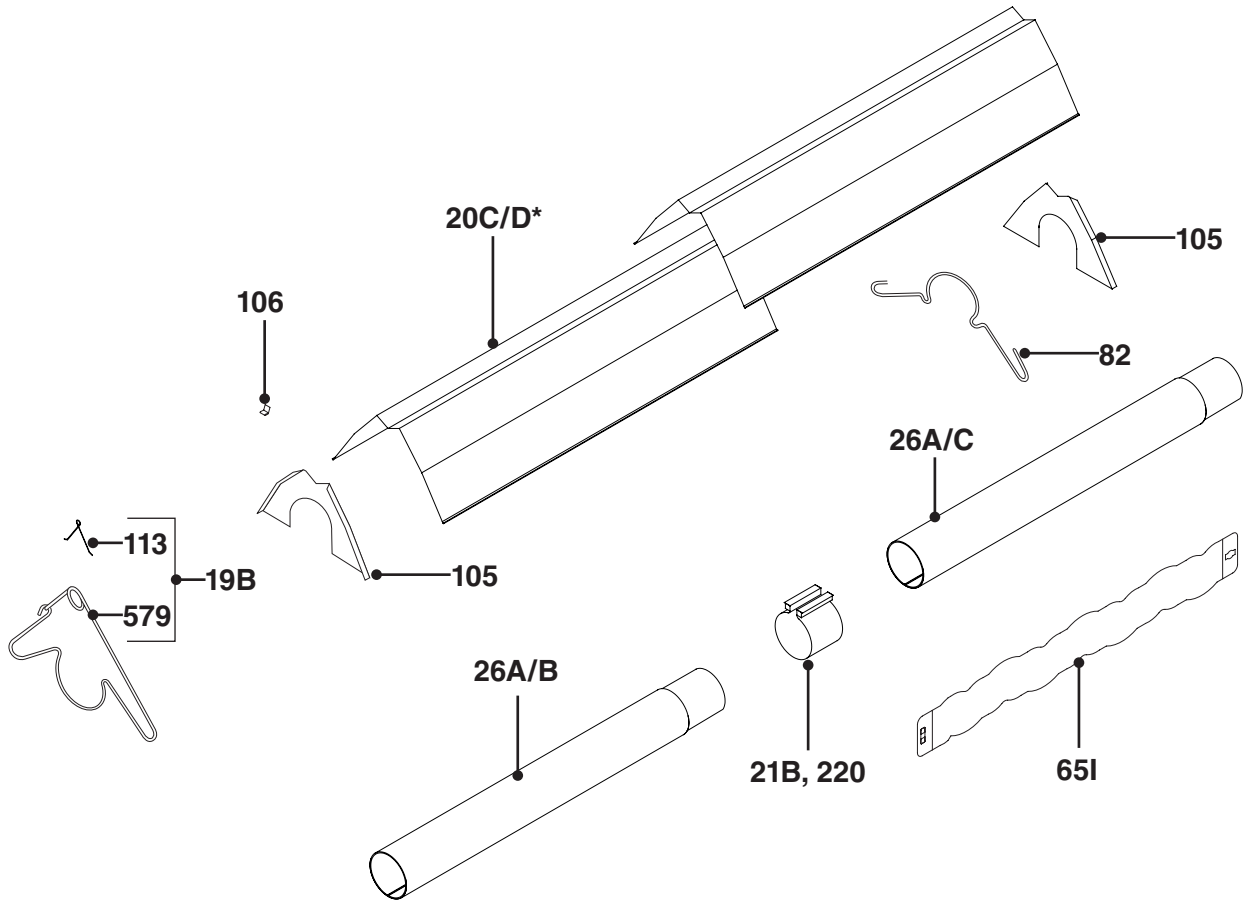


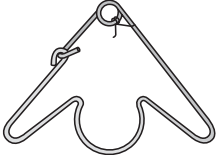

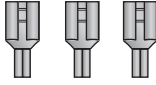

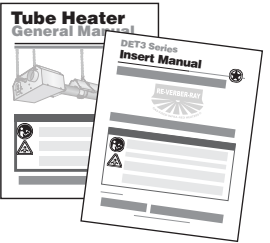
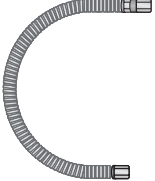
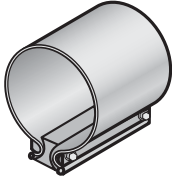

Chart 5.2 • Parts List

Part #	Description	Part #	Description
TP-331	Green Self-Tap Ground Screw (Qty. 2)	TP-3012	Spark Igniter Box Cover
TP-332	Divider Grommet	TP-3014	Plastic Air Orifice w/ Screen - Contact Factory
TP-333	6 ft. Black 120VAC Power Cord	TP-3033B	DET3 Power Entry Plate
TP-550	Spark Transfer Wire - Orange	TP-3044	Gas Manifold
TP-579	4 in. Wire Hanger	TP-3051	35-72 DSI Circuit Board
TP-583	Spark Igniter Plate	TP-3052	Wiring Harness
TP-826	40VA Transformer	TP-3055	Spark Igniter Electrode
TP-828	Yellow 24VAC High Fire Indicator Light	TP-3060	Pressure Switch Mounting Bracket
TP-832	Thermostat Terminal Strip	TP-3072	Low BTU Burner (Color Code - GREEN)
TP-1018	APS 1/4 in. Silicone Sensing Tube	TP-3093	#8-32 Cage Nut (Qty. 4)
TP-1264A	Differential Pressure Switch, 100 to 125 MBH	TP-3094	#8-32 x 1/2 in. Black Nylon Shoulder Screw (Qty. 4)
TP-1325	24VAC Switching Relay (Qty. 2)	TP-3096A	Valve Compartment Bottom Panel
TP-3001	Divider Panel	TP-3097A	Valve Compartment Top Panel
TP-3002A	Plastic Control Compartment End Panel	TP-3098	Valve Compartment Side Panel
TP-3003A	Plastic Fan Compartment End Panel	TP-3099	Controls Mounting Panel
TP-3004	Main Control Box Panel	TP-3140	36G54-224 Gas Valve - Natural Gas Assembly
TP-3005A	Plastic Valve Compartment Lid	TP-3141	36G54-226 Gas Valve - Propane Gas Assembly
TP-3008A	Gas Valve Mounting Bracket	TP-3215	1/15 hp Inducer Assembly (175-200 MBH)
TP-3010	Service Panel Hinge	TP-3216	Restrictor Plate (175-200 MBH)
TP-3011	Spark Igniter Box	TP-3580	16 in. DSI Burner Tube Flange with Fittings

* Optional upgrade or add-on item.

Kit Contents Check List

Chart 5.3 • Kit Contents for DET3 Series - Reference the length column for your model.

DET3 Series Kit Contents							
<p>TP-19B 4" Hanger with Reflector Tension Spring</p> 	<p>TP-82 4 in. Reflector Center Support (RCS)</p> 	<p>TP-25* 1/4 in. Female Spade Terminals</p> 	<p>TP-106 Reflector End Cap Clips</p> 	<p>General Manual and DET3 Series Insert F/N: LIOGT3 & LIODET3</p> 			
<p>TP-83 24 in. Stainless Steel Flex. Gas Connector</p> 	<p>TP-21B 4 in. Tube Clamp</p> 	<p>TP-105 Reflector End Cap</p> 					
Part No.	Description	20 ft.	30 ft.	40 ft.	50 ft.	60 ft.	70 ft.
TP-19B	4 in. Wire Hanger	3	4	5	6	7	8
TP-21B	4 in. Tube Clamps	2	3	4	5*	6*	7*
TP-25	1/4 in. Female Spade Terminals	3	3	3	3	3	3
TP-82	4 in. Reflector Center Support	1	1	1	1	1	1
TP-83	24 in. S.S. Flexible Gas Connector	1	1	1	1	1	1
TP-105	Reflector End Caps	2	2	2	2	2	2
TP-106	Reflector End Cap Clips	8	8	8	8	8	8
LIOGT3	Tube Heater General Manual	1	1	1	1	1	1
LIODET3	DET3 Series Insert Manual	1	1	1	1	1	1
Filled By:							

* One 4" stainless steel tube clamp (P/N: TP-220) is provided for each 175,000 - 200,000 BTU model. Place as shown on page 11.

Approvals

- CSA
- Indoor Approval
- Outdoor Approval with OD-KIT
- Commercial Approval

Limited Warranty

- 1 year - Burner box components
- 2 years - Combustion and radiant tubes
- 3 years - Stainless steel burner
- See page 40 of the General Tube Heater Manual for Terms and Conditions



© 2021 Detroit Radiant Products Co.
21400 Hoover Road • Warren, MI 48089
Phone: (586) 756-0950 Fax: (586) 756-2626
www.detroitradiant.com • sales@drp-co.com

