



# WIRING DIAGRAM

DIAGRAM:

## LLWT107

### HL3/AG2 SERIES w/ HLRP

WIRING INFORMATION:

LINE VOLTAGE:

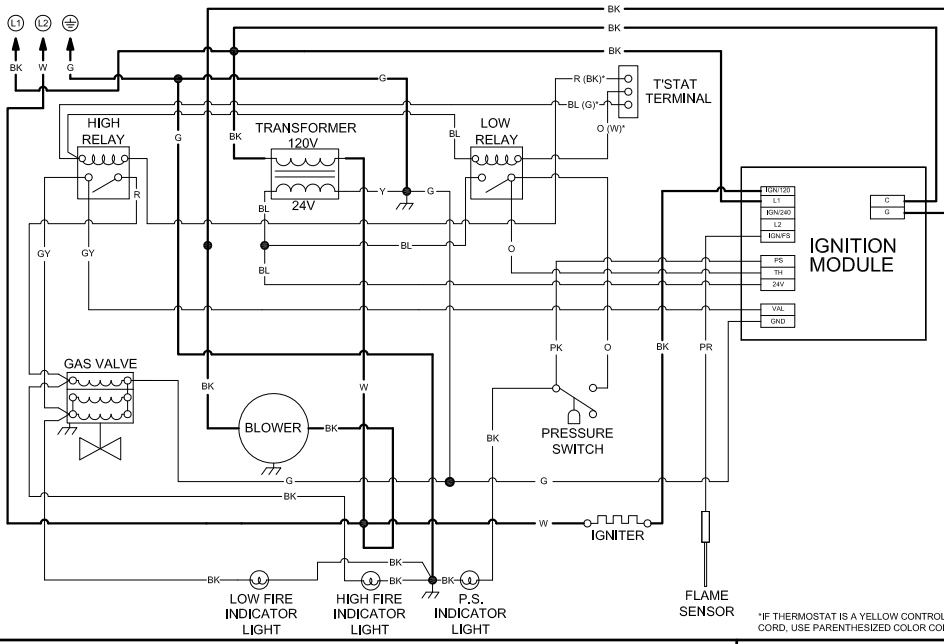
FACTORY STANDARD \_\_\_\_\_  
 FACTORY OPTION \_\_\_\_\_  
 FIELD INSTALLED \_\_\_\_\_

LOW VOLTAGE:

FACTORY STANDARD \_\_\_\_\_  
 FACTORY OPTION \_\_\_\_\_  
 FIELD INSTALLED \_\_\_\_\_

NOTES:

IF ANY OF THE ORIGINAL WIRE AS SUPPLIED WITH THE APPLIANCE MUST BE REPLACED, IT MUST BE REPLACED WITH WIRING MATERIAL HAVING THE RATING OF AT LEAST 600V 105°C



\*IF THERMOSTAT IS A YELLOW CONTROL CORD, USE PARENTHESIZED COLOR CODE

## COMPONENT CODES

⊕ EARTH GROUND	TRANSFORMER	PRESSURE SWITCH
CHASSIS GROUND	BLOWER MOTOR	S.P.S.T. RELAY
Ⓛ LINE VOLTAGE	HOT SURFACE IGNITER	INDICATOR LIGHT
Ⓜ NEUTRAL	SPARK IGNITER	GAS VALVE
● WIRE NUT	FLAME SENSOR	QUICK-CONNECT TERM.

## WIRING COLORS:

BK.....BLACK  
 BN.....BROWN  
 R.....RED  
 O.....ORANGE  
 Y.....YELLOW  
 G.....GREEN  
 BL.....BLUE  
 PR.....PURPLE  
 W.....WHITE  
 GY.....GRAY  
 PK.....PINK

VOLTAGE:

120VAC

FREQUENCY:

60Hz

PHASE:

SINGLE

REVISION:

3

LITERATURE NUMBER:

LLWT 107-2M-10/13 (CDS)