

DGS SERIES

FILTERED SHORT-WAVE ELECTRIC INFRARED HEATER

RE-VERBER-RAY®

by Detroit Radiant Products Company

Designer Series

The DGS Series has proven to be an excellent option for electric heating that values aesthetics with its modern design and high-end quality.

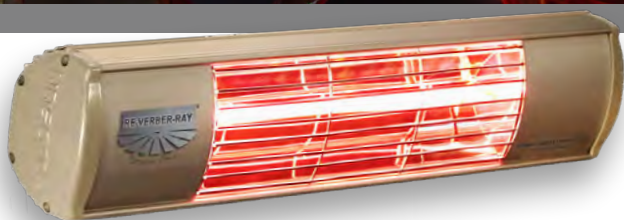
This heater features a custom designed reflector that focuses the desired heat pattern to your space. Thanks to its aluminum extruded body, the DGS Series is easily able to withstand harsh outdoor conditions, allowing you to extend your residential patio or outdoor restaurant season. Plus, its sleek appearance adds style to any indoor or outdoor space.

BENEFITS OF HEATING WITH ELECTRIC INFRARED

- Superior Comfort
- Reduced Energy Consumption
- Durability
- Even Heat Distribution
- Outdoor Tested & Approved
- Long Lamp Life Expectancy

PRODUCT FEATURES

- High-end Quality and Compact, Aesthetic Design
- Custom Designed Parabolic Reflector
- Rustproof, IP55 Water Resistant Design
- High Capacity Range
- Gold-filtered Red Lamps
- Compact Design with Protective Grill
- Universal Burning Position
- Instant Heat up to 3500°F



DGS SERIES

FILTERED SHORT-WAVE ELECTRIC INFRARED HEATER

PRODUCT SPECIFICATIONS



Electrical Consumption:
1,500 to 2,000 watts



Equivalent BTU/h:
5,118 to 6,824 BTU/h



Mounting Options:
Chains or Mounting Bracket for Universal Positioning



Lamp Elements:
Gold-filtered Quartz Lamps



Housing:
Bronzed Extruded Aluminum Body with Rustproof Body Parts and Protective Grill



Certifications & Approvals:
CE Certified, Indoor & Outdoor Commercial, Outdoor Residential, IP55 Water Resistant



Limited Warranty:
1-Year (All Components)



Electrical:
120VAC (1,500 W); 230VAC (2,000 W)

AVAILABLE DGS MODELS & CLEARANCES

MODEL #	WATTS	VOLTS	AMPS	BTUs	MOUNTING HEIGHTS ¹	APPROX COVERAGE	DIMENSIONS (INCHES)	WEIGHT	CLEARANCES TO COMBUSTIBLES (INCHES) ²	MOUNTING ANGLE ³	SIDE	TOP	BELOW	END
DGS-Z1-A15	1,500	120	12.5	5,118	7-9 ft.	100 Ft ²	21.06"L x 4.61"W x 4.84"H	5.7 lbs		0°	10	3	64	21
DGS-Z1-C20	2,000	230	8.7	6,824	7-9 ft.	100 Ft ²	21.06"L x 4.61"W x 4.84"H	5.7 lbs		0°	10	3	64	21

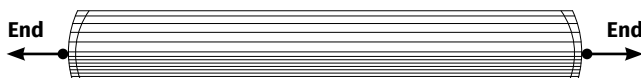
¹ Factory recommended mounting heights are provided as a guideline. Actual conditions may dictate variations from the above data.

² A minimum clearance of 36 inches must be maintained from behind another heater. Ensure that building materials with a low heat tolerance (i.e., awnings, fabrics, plastics, sprinklers, insulation, etc.) are protected against degradation. This may require the heater to be mounted at a distance in excess of the published clearances to combustibles. Contact the material manufacturer for specific details. Supplied bracket to be used for 0° mounting on 1,500 W and 2,000 W models only.

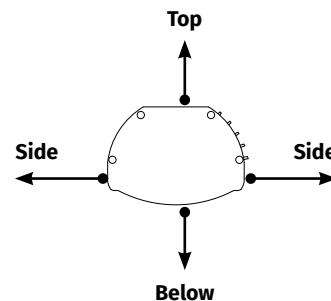
³ Refer to DGS Manual for additional information about clearances for 45° Mounting Angle.

Always maintain the published clearances to combustibles. Clearances published in DGS Series manual and on warning label supersede data shown on this brochure.

SIDE VIEW - 0° Mounting Angle



END VIEW 0° - Mounting Angle



DETROIT RADIANT
PRODUCTS COMPANY

21400 Hoover Road, Warren, Michigan 48089 USA
+1.586.756.0950 | sales@drp-co.com

www.REVERBERRY.com



Form No. LBDGS_1018_r1-06/23 (PM)

