

REV SERIES

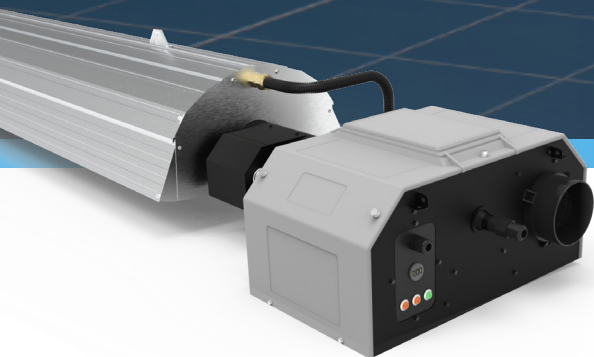
RE-VERBER-RAY
by Detroit Radiant Products Company

INFRARED RADIANT HEATERS

PREMIER, TWO STAGE, MULTI-CONFIGURABLE LOW INTENSITY TUBE HEATER

Unsurpassed Flexibility and Fuel Efficiency

With a host of innovative and patent pending features never before seen in the marketplace, the REV Series is here to revolutionize the infrared industry. The adjustable reflector and pre-heated combustion air mean the REV Series leads the pack in heater efficiency. High quality materials and superior workmanship ensure years of reliable and efficient operation for heaters that are truly in a class of their own.



BENEFITS OF THE REV SERIES

- Solid extruded aluminum reflector
- Single Pass and Dual Pass geometry with models capable of achieving an Infrared Factor (IF) up to 15 and Radiant Emission Value (REV) in excess of 110
- Pre-heated combustion air and insulated air pockets

PRODUCT FEATURES

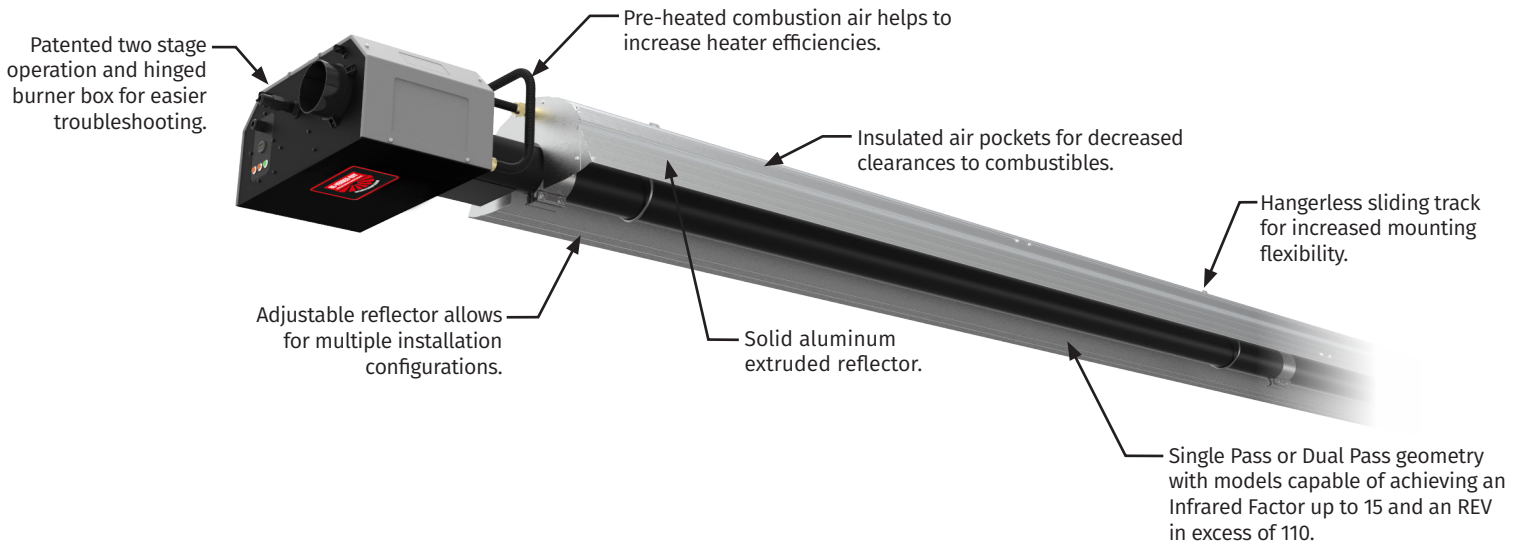
- Insulated air pockets for decreased clearances to combustibles
- Adjustable reflector to allow for variable configurations
- Pre-heated combustion air
- Hangerless sliding track for increased mounting flexibility
- Solid aluminum extruded reflector
- Patent Pending

REV SERIES

PREMIER, TWO STAGE, MULTI-CONFIGURABLE LOW INTENSITY TUBE HEATER



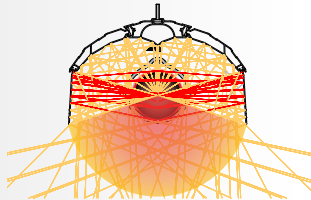
CONSTRUCTION FEATURES



AVAILABLE CONFIGURATIONS

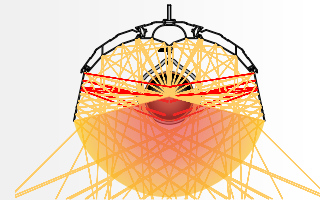
A NARROW, DUAL PASS

With approximately 88% reflectivity, this configuration has a narrower heat throw and increased tube temperatures, allowing for more heat at the floor level.



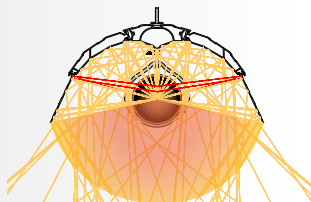
B NEUTRAL, DUAL PASS

With approximately 94% reflectivity, this configuration has a slightly wider heat throw than the narrow configuration while still maintaining increased tube temperatures.



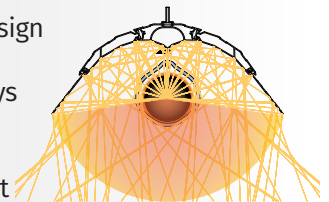
C WIDE, DUAL PASS

With approximately 99% reflectivity, this configuration allows for a wider heat throw pattern at the floor level with minimal reflection back to the radiant tube. Floor level heat will be less intense.



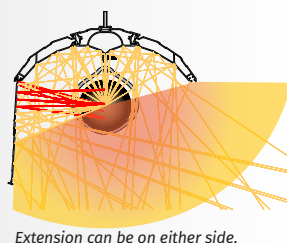
D ULTRA WIDE, SINGLE PASS

Also referred to as 100% Design Efficient, this configuration reflects ~100% of radiant rays to the floor level without contacting the tube. This produces a much wider heat pattern at the floor level, but less intense heat.



E OPEN THROW/35°

The open throw configuration mimics the use of a side shield extension as well as angled mounting. Heat is directed outwards, and the extension can be used on either side.



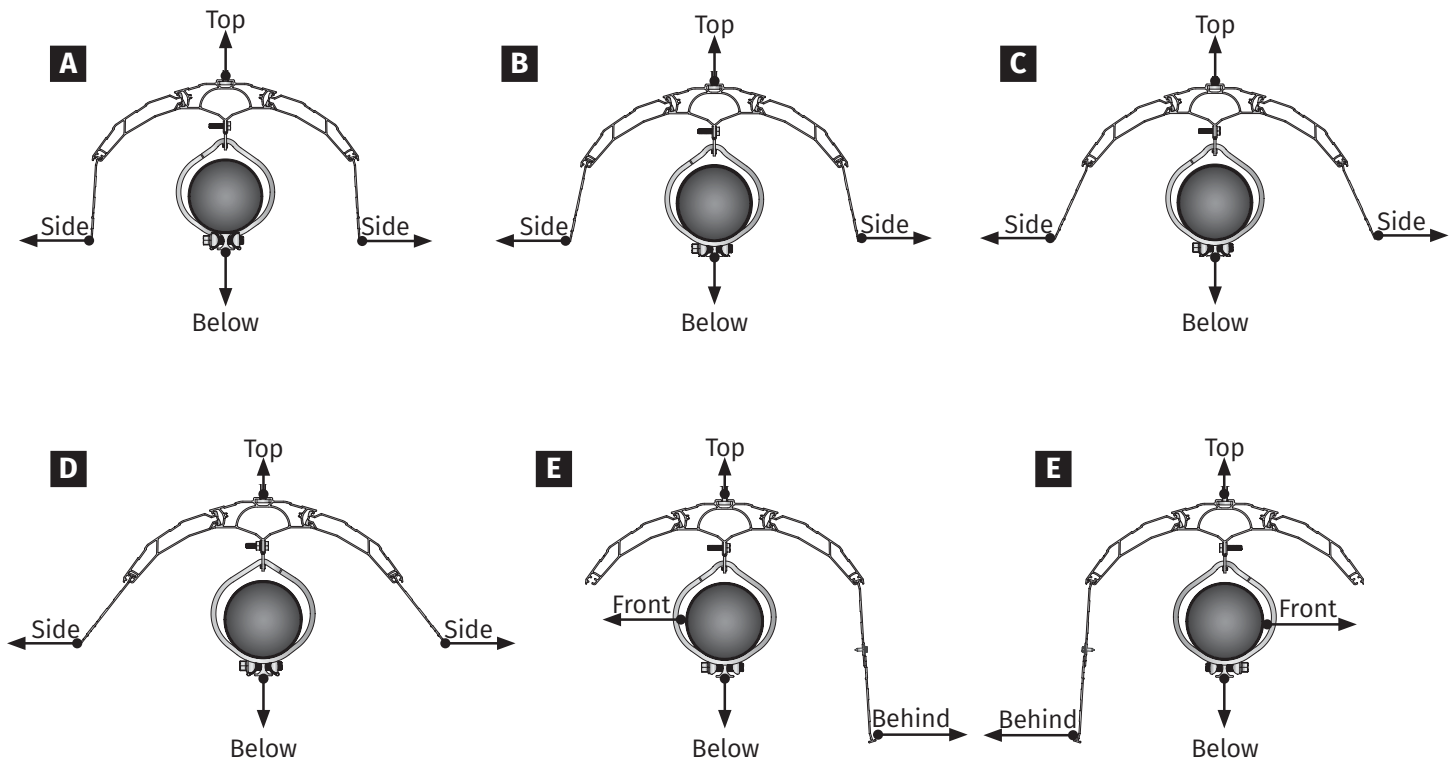
REV SERIES

PREMIER, TWO STAGE, MULTI-CONFIGURABLE LOW INTENSITY TUBE HEATER



CLEARANCES TO COMBUSTIBLES

Configuration	Model Number (Length) - MBH	Sides		Top	Below	End
		Front	Behind			
A, B, C 0°-Dual Pass	REV (20, 30, 40)-65, 75, 100 [N, P]	28	28	2	72	12
	REV (40, 50)-125, 150 & (60)-150 [N, P]	37	37		81	
	REV (50, 60)-175, 200 [N, P]	47	47		97	
	20-Ft. From Burner	11	11	2	55	12
D 0°-Ultra-Wide Single Pass	REV (20, 30, 40)-65, 75, 100 [N, P]	18	18	2	72	12
	REV (40, 50)-125, 150 & (60)-150 [N, P]	27	27		81	
	REV (50, 60)-175, 200 [N, P]	34	34		97	
	20-Ft. From Burner	10	10	2	55	12
E 35°-Forward Shield/Open Throw	REV (20, 30, 40)-65, 75, 100 [N, P]	43	10	4	59	12
	REV (40, 50)-125, 150 & (60)-150 [N, P]	57	10		76	
	REV (50, 60)-175, 200 [N, P]	70	15		94	
	20-Ft. From Burner	22	10	4	46	12



REV SERIES

PREMIER, TWO STAGE, MULTI-CONFIGURABLE LOW INTENSITY TUBE HEATER

PRODUCT SPECIFICATIONS



Input Range:
65,000 to 200,000 BTU/h



Lengths:
20-ft. to 60-ft.



Gas Type:
Natural (3.5" W.C.) or Propane (10.0" W.C.)



Emitter Tubes:
4" Titanium Stabilized or Aluminized Steel (Combustion Chamber) & .95 Emissive Black-Coated Aluminized Steel (Radiant Tubes)



Reflector:
Extruded Aluminum with .070 Wall Thickness & Insulated Air Pockets



Certification:
CSA, Indoor, Outdoor



Limited Warranty:
3 (Components) - 5 (Tubes) - 10 (Burner)



Electrical:
120V, 60 Hz. 24V Control
Amps: 4.8 Starting, 1.1 Running



AVAILABLE REV MODELS & SPECIFICATIONS

MODEL #	GAS ¹	BTU/h HIGH FIRE	BTU/h LOW FIRE	LENGTH	WEIGHT	MOUNTING HEIGHTS ²	COMBUSTION CHAMBER	RADIANT EMITTER TUBES
REV-20-65	Nat or Prop	65,000	50,000	21'-9"	206 lbs.	9' to 14'	Alum	Alum
REV-20-75	Nat or Prop	75,000	50,000	21'-9"	206 lbs.	10' to 15'	Alum	Alum
REV-30-65	Nat or Prop	65,000	50,000	31'-5"	289 lbs.	10' to 15'	Alum	Alum
REV-30-75	Nat or Prop	75,000	50,000	31'-5"	289 lbs.	11' to 18'	Alum	Alum
REV-30-100	Nat or Prop	100,000	65,000	31'-5"	289 lbs.	12' to 20'	Alum	Alum
REV-40-65	Nat or Prop	65,000	50,000	41'-1"	362 lbs.	11' to 18'	Alum	Alum
REV-40-75	Nat or Prop	75,000	50,000	41'-1"	362 lbs.	11' to 18'	Alum	Alum
REV-40-100	Nat or Prop	100,000	65,000	41'-1"	362 lbs.	12' to 20'	Alum	Alum
REV-40-125	Nat or Prop	125,000	82,000	41'-1"	362 lbs.	13' to 23'	Alum	Alum
REV-40-150	Nat or Prop	150,000	100,000	41'-1"	362 lbs.	14' to 25'	Titan-Alum	Alum
REV-50-125	Nat or Prop	125,000	82,000	50'-9"	450 lbs.	15' to 27'	Alum	Alum
REV-50-150	Nat or Prop	150,000	100,000	50'-9"	450 lbs.	15' to 27'	Titan-Alum	Alum
REV-50-175	Nat or Prop	175,000	125,000	50'-9"	450 lbs.	16' to 30'	Titan-Alum	Alum
REV-50-200	Nat or Prop	200,000	145,000	50'-9"	450 lbs.	17' to 35'	Titan-Alum	Alum
REV-60-150	Nat or Prop	150,000	100,000	60'-5"	523 lbs.	16' to 30'	Titan-Alum	Alum
REV-60-175	Nat or Prop	175,000	125,000	60'-5"	523 lbs.	16' to 30'	Titan-Alum	Alum
REV-60-200	Nat or Prop	200,000	145,000	60'-5"	523 lbs.	17' to 35'	Titan-Alum	Alum

¹ Specify natural (Nat) or propane (Prop) gas.

² Factory recommended mounting heights are provided as a guideline. Actual conditions may dictate variations from the above data.

Always maintain the published clearances to combustibles. **Not for residential use.**
Clearances published in REV Series manual and on warning label supersede data shown on this brochure.



**DETROIT RADIANT
PRODUCTS COMPANY**

21400 Hoover Road, Warren, Michigan 48089 USA
+1.586.756.0950 | sales@drp-co.com

www.REVERBERRY.com



Form No. LBREV_2M-06/23 (CDS)

