

# Low Intensity Accessory Instruction Sheet

## External Relay Kit (P/N: ERK & ERK-HE)

**NOTE:** For use with LS3, LD3, DX3L, HL2, HL3, REV, MP3\*, CX3, and CL3 models only.  
The External Relay Kit can be used on multiple heaters that are to be controlled by a single thermostat.

\* For MP3 Series heaters, refer to wiring diagrams in MP3 Series manual.

### Kit Contents

- (1) External Relay Kit Box
- (3) Fork Terminals
- (3) Spade Terminals
- (6) Wire Nuts
- (1) #8 x 1/2" Black Sheet Metal Screw

**NOTE:** One kit per heater is required.

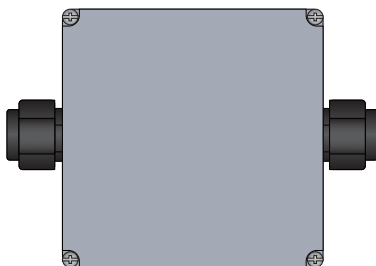
### Tools Required:

- Drill with 1/4 Inch Driver
- Crimper
- Wire Stripper

**ERK External Relay Kit:** Standard Series 3 heaters and can be mounted on the heater.



**ERK-HE External Relay Kit:** For wet or harsh environment applications and can be mounted near the heater.



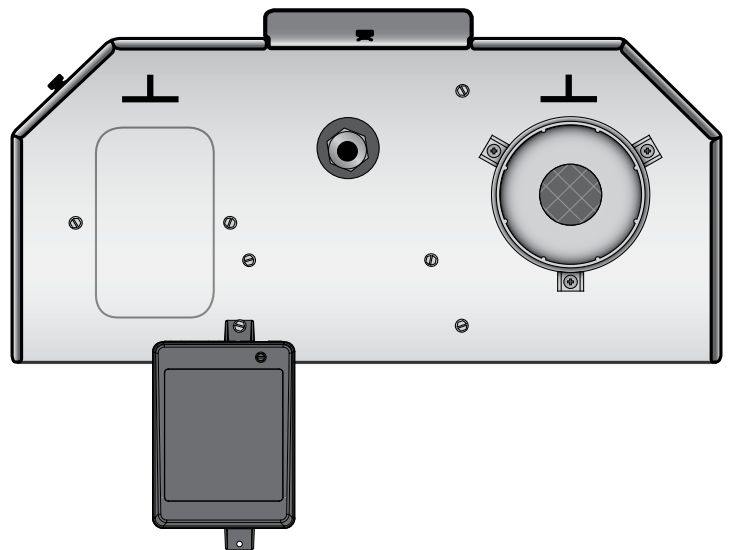
### WARNING



The following installation **MUST** be performed by a qualified service person. Improper installation, adjustment, service or maintenance can cause property damage, injury or death.

### Figure 1 • External Relay Kit Mounting

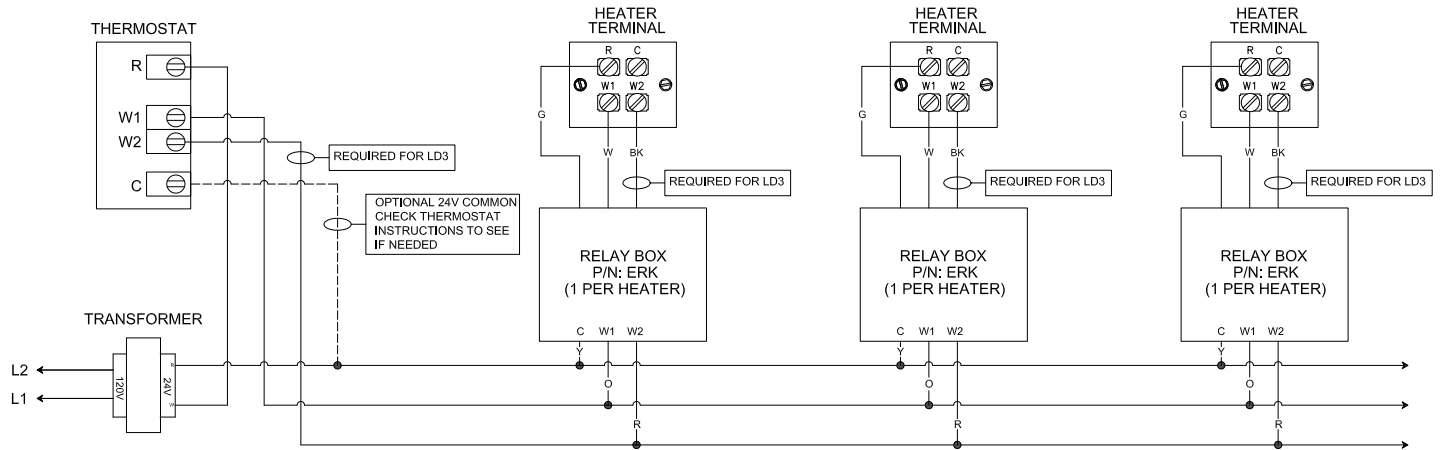
**Note:** When using the ERK-HE on stainless steel heaters or Series 2 heaters, the device must be mounted near the heater.



# Low Intensity Accessory Instruction Sheet

## External Relay Kit (P/N: ERK & ERK-HE)

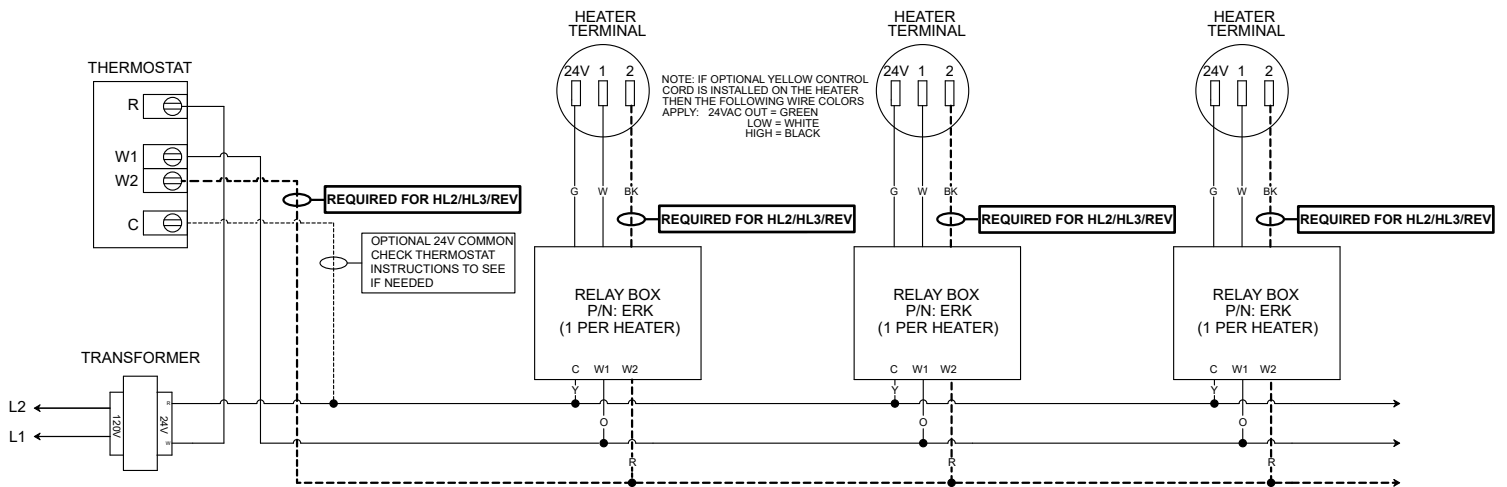
Figure 2 • LS3 and LD3 Field Wiring Diagram



**Note:** W2 is not used on single stage scenarios.

**Note:** Use the included fork terminals to make electrical connections at the heater.

Figure 3 • DX3L, HL2, HL3, & REV Field Wiring Diagram



**NOTE:** Use the included spade terminals to make electrical connections at the heater.