


Thermostat Instruction Sheet

TH-DSP2Z Premier Heater Controller

WARNING

 To avoid electrical shock or damage to equipment, disconnect all power before installing or servicing.

Specifications

Operation: Two stage & single stage options

Purpose: Operation of appliances with high/low switching in two stage and positive off when using single stage controller

Electrical Rating: 24 V switching, 3 A max. @ 250 V/6.25 A max. @ 120 V per button

Contact Action: Momentary

Face Plate Dimensions: 7.5" x 9.5" x 0.125"

Box Dimensions: 8.0625" W x 6" H x 4" D

Features: 1-hour backup timer with override, heater fault indicator, & adjustable timer duration (30, 60, or 120 mins.)

Figure 1 • TH-DSP2Z Controller



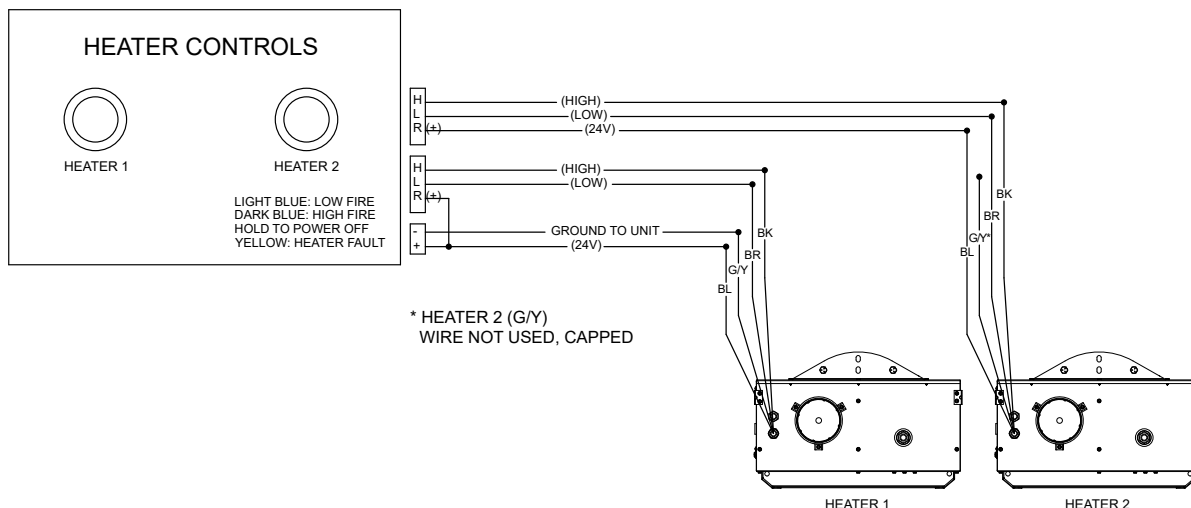
Installation Instructions

Must be mounted to the provided electrical junction box or equivalent junction box suitable for the application.

Chart 1 • Button Operation & Status

RING COLOR	STATUS	ACTION
Off	Heater Off	Default*
Light Blue	Low Fire	1 Button Press
Dark Blue	High Fire	2 Button Presses - Additional press returns to low fire
Red	Timers Overridden*	Hold both buttons for 3 seconds. To cancel override, press any button.
Yellow	Heater Fault	Service Heater

Figure 2 • Field Wiring Diagram - Controlling multiple heaters with a single control device



* Timer will expire after 1 hour. To turn heater off prior, hold button for 1 second. Internal timer is set to 60 minutes by default. To adjust the timer duration, consult the factory for wiring adjustments.